

**15**  
**SET**

**DOMINGO**  
**14h00**  
HORÁRIO DE BRASÍLIA

— 8º LEILÃO —

# TOUROS

## NELORE CUTOLO

PRECOCIDADE E RENDIMENTO DE CARÇA

**CATÁLOGO DIGITAL**

REALIZAÇÃO



CUTOLO

TRANSMISSÃO



AgroCanal

LEILOEIRA



Ricardo Nicolau Leilões

ASSESSORIA



Prospera

PATROCINADOR



Nutripura

APOIO



Iguaçu Máquinas



BOTUVERÁ

HOMOLOGADO



LEILÃO SHOPPING

CHANCELADO



PRÓ-GENÉTICA

— 8º LEILÃO —

# TOUROS

## NELORE CUTOLO

PRECOCIDADE E RENDIMENTO DE CARÇAÇA

### ONDE ASSISTIR O LEILÃO

**15**  
SET

DOMINGO  
**14h00**  
HORÁRIO DE BRASÍLIA



**AgroCanal**

Canais 154 e 554

Aplicativo

**SKY**<sup>®</sup>



**ASSISTA  
PELO APP!**

REALIZAÇÃO



TRANSMISSÃO



LEILOEIRA



ASSESSORIA



PATROCINADOR



APOIO



HOMOLOGADO



CHANCELADO



# CONDIÇÕES DE FRETE



**FRETE GRÁTIS**  
QUALQUER QUANTIDADE

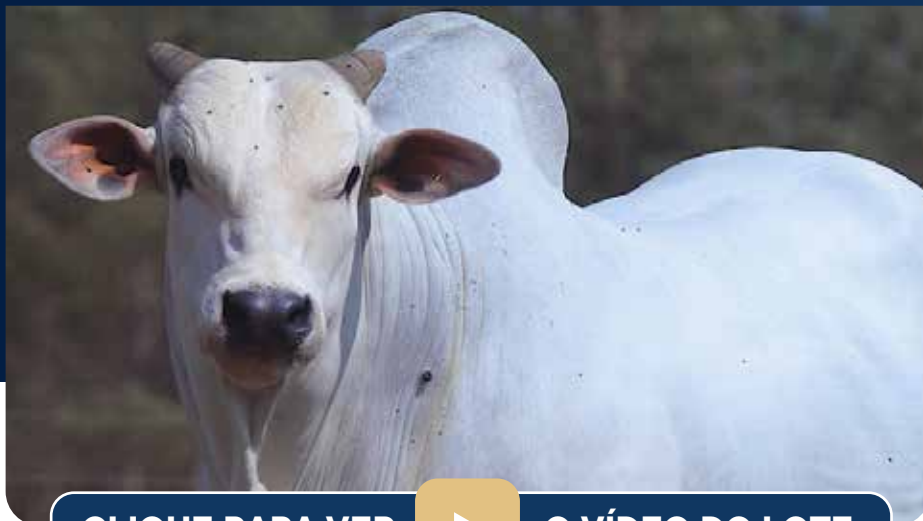
**FRETE GRÁTIS**  
A PARTIR DE 3 LOTES  
\*ATÉ NOVO PROGRESSO (PA)

**SOB  
CONSULTA**

LOTE 1

INDIVIDUAL

CUTOLO  
AGROPECUÁRIA



CLIQUE PARA VER



O VÍDEO DO LOTE

PHOC 2765

2765 FIV PHOC

PESO 831 • NASCIMENTO 10/10/2022 • CE 42

B5968 FIV DA S.NICE

GALAPAGO TE DA BELA

CARBONO FIV DA S.NICE

NANA STM

B6444 DA S.NICE

INFINITA STM

US  
DGT  
PROST

AOL	EGS	MAR
115.8	5.68	4.08 <sup>1</sup>



	iABCZg	PD-ED	PS-ED	PM-EM	TMD	IPPg	STAYg	AOLg	ACABg
DEP	26.23	11.5	17.23	1.82	8.1	-36.0	41.3	2.65	1.32
DECA	1	1	1	2	1	1	1	1	1
%P	0.5	0.5	3	-	2	0.1	0.5	3	



	IQG	DepPN	DepPM	DepPD	TMD	DepPS	GPD	IPP	AOL	EGS
DEP	27.6	0.86	1.82	11.50	8.07	17.23	5.72	-36.03	2.65	1.32
TOP	2		20	1	3	5	20	0.5	5	13
CLASSE	E									



	MGTe	MP120	DP210	DP450	DAOL	DACAB	DSTAY	D3P	MGTe_CR
DEP	21.76	0.7	11.4	20.4	3.5	0.3	87.8	77.0	22.0
TOP	7	50	7	8	5	12	3	35	8

LOTE 2

INDIVIDUAL

CUTOLO  
AGROPECUÁRIA



CLIQUE PARA VER



O VÍDEO DO LOTE

PHOC 2412

2412 PHOC

PESO 805 • NASCIMENTO 21/07/2022 • CE 39

ZAPP BEABISA

AVESSO TE DA BELA

DAMASCO MAT.

MILA FIV STM

AMBOA MAT.

JULIET STM

US  
DGT  
PROST

AOL	EGS	MAR
106.4	4.73	2.91



	iABCZg	PD-ED	PS-ED	PM-EM	TMD	IPPg	STAYg	AOLg	ACABg
DEP	26.13	9.2	20.48	2.23	6.5	-23.7	42.1	3.22	0.72
DECA	1	1	1	2	1	1	1	1	3
%P	0.5	3	1	-	5	3	0.5	1	



	IQG	DepPN	DepPM	DepPD	TMD	DepPS	GPD	IPP	AOL	EGS
DEP	34.4	0.27	2.23	9.22	6.53	20.48	11.26	-23.73	3.22	0.72
TOP	0.5		14	4	8	2	2	3	2	28
CLASSE	E									

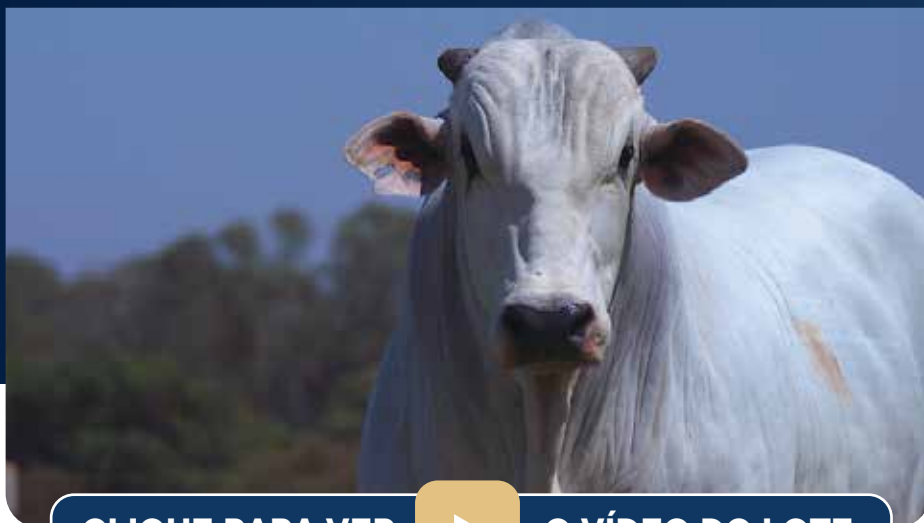


	MGTe	MP120	DP210	DP450	DAOL	DACAB	DSTAY	D3P	MGTe_CR
DEP	22.86	2.9	8.6	18.0	3.0	0.2	89.1	88.9	24.8
TOP	6	9	14	11	7	15	2	2	4

LOTE 3

INDIVIDUAL

CUTOLO  
AGROPECUÁRIA



CLIQUE PARA VER



O VÍDEO DO LOTE

PHOC 2865

2865 PHOC

PESO 793 • NASCIMENTO 05/11/2022 • CE 38

RAMBO DA MN

REM ARMADOR

GALAPAGO TE DA BELA

NEPALESA FIV STM

JURADA DA BONS.

JAMILI FIV STM

US  
DGT  
BROSI

AOL	EGS	MAR
104.5	5.67	3.27



	iABCZg	PD-ED	PS-ED	PM-EM	TMD	IPPg	STAYg	AOLg	ACABg
DEP	20.76	13.5	19.61	1.78	8.3	-13.4	34.9	3.25	3.02
DECA	1	1	1	2	1	2	2	1	1
%P	2	0.1	2	-	2	-	-	1	



	IQG	DepPN	DepPM	DepPD	TMD	DepPS	GPD	IPP	AOL	EGS
DEP	24.3	0.74	1.78	13.51	8.27	19.60	6.10	-13.39	3.25	3.02
TOP	4		20	0.5	3	3	18	19	2	0.5
CLASSE	E									

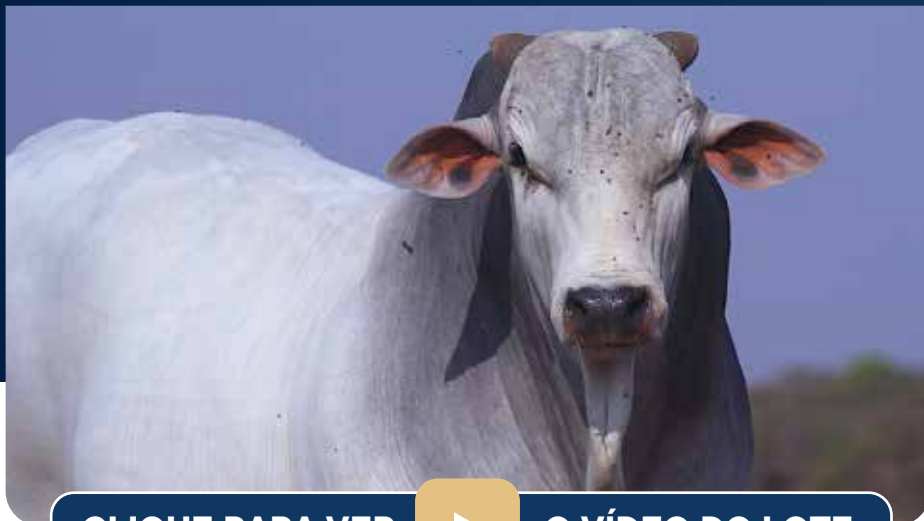


	MGTe	MP120	DP210	DP450	DAOL	DACAB	DSTAY	D3P	MGTe_CR
DEP	25.18	1.3	15.7	25.7	3.9	0.3	88.0	82.4	25.1
TOP	3	33	2	3	3	13	3	15	3

LOTE 4

INDIVIDUAL

CUTOLO  
AGROPECUÁRIA



CLIQUE PARA VER



O VÍDEO DO LOTE



PHOC 2600

2600 FIV PHOC

PESO 821 • NASCIMENTO 05/09/2022 • CE 40

MACEGAL DO IZ

SHERLOCK MAT.

QUEDHAR FIV G.SALES

OCEANA FIV STM

LORANE G.SALES

INFINITA STM

US  
DGT

AOL	EGS	MAR
126.9 <sup>4</sup>	6.63	2.60



	iABCZg	PD-ED	PS-ED	PM-EM	TMD	IPPg	STAYg	AOLg	ACABg
DEP	22.87	10.2	20.75	3.86	10.3	-2.6	37.9	4.40	2.02
DECA	1	1	1	1	1	5	1	1	1
%P	1	2	1	2	0.5	-	4	0.1	



	IQG	DepPN	DepPM	DepPD	TMD	DepPS	GPD	IPP	AOL	EGS
DEP	32.4	0.62	3.86	10.17	10.26	20.75	10.58	-2.56	4.40	2.02
TOP	1		2	3	1	2	3	55	0.5	4
CLASSE	E									



	MGTe	MP120	DP210	DP450	DAOL	DACAB	DSTAY	D3P	MGTe_CR
DEP	23.61	4.7	11.4	22.2	4.8	0.8	82.1	72.7	22.3
TOP	5	2	7	6	1	2	10	53	7



CLIQUE PARA VER



O VÍDEO DO LOTE

PHOC 2867

2867 PHOC

PESO 817 • NASCIMENTO 05/11/2022 • CE 41

ZAPP BEABISA

REM UPONIC

UNIVERSO FIV DE NAVIRAI

JUNICA STM

FILUSTRIA DE NAVIRAI

DJ4878



AOL	EGS	MAR
107.5	5.21	3.07



	iABCZg	PD-ED	PS-ED	PM-EM	TMD	IPPg	STAYg	AOLg	ACABg
DEP	25.01	13.6	21.96	3.99	11.5	-5.6	37.5	5.12	2.17
DECA	1	1	1	1	1	4	1	1	1
%P	0.5	0.1	0.5	1	0.1	-	5	0.1	



	IQG	DepPN	DepPM	DepPD	TMD	DepPS	GPD	IPP	AOL	EGS
DEP	30.1	1.20	3.99	13.60	11.50	21.96	8.36	-5.64	5.12	2.17
TOP	2		2	0.5	0.5	1	8	44	0.1	3
CLASSE	E									



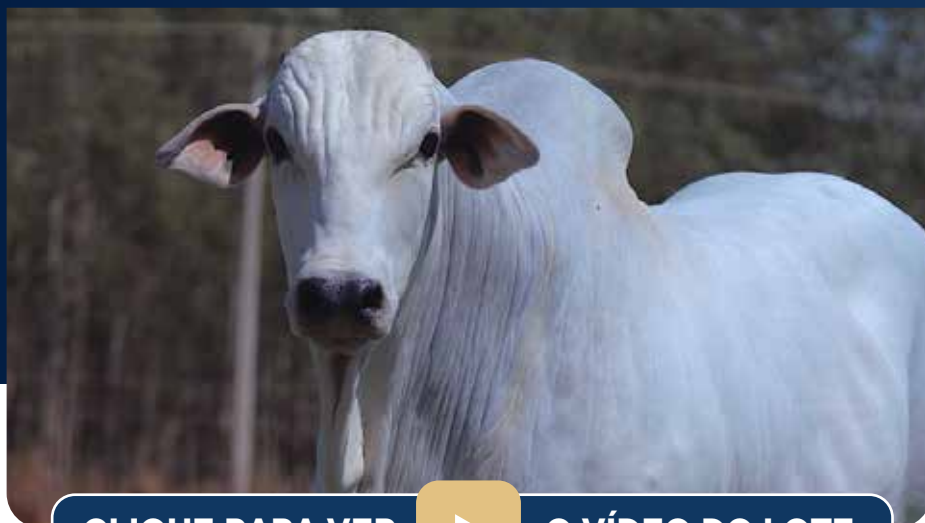
	MGTe	MP120	DP210	DP450	DAOL	DACAB	DSTAY	D3P	MGTe_CR
DEP	25.8	6.0	14.0	27.8	5.2	0.6	81.0	72.9	23.8
TOP	3	0.5	3	2	1	3	11	52	5



LOTE 6

INDIVIDUAL

CUTOLO  
AGROPECUÁRIA



CLIQUE PARA VER



O VÍDEO DO LOTE

PHOC 2871

2871 PHOC

PESO 709 • NASCIMENTO 10/11/2022 • CE 34

REM CABALLERO

1384 TE DE NAV.

HULK TE DA HORA



NINA FIV STM

2128 TE DA HORA

LACHI FIV STM

US  
DGT  
PROST

AOL	EGS	MAR
109.5	7.57	3.65



	iABCZg	PD-ED	PS-ED	PM-EM	TMD	IPPg	STAYg	AOLg	ACABg
DEP	24.1	7.6	18.33	1.69	5.8	-29.7	40.8	2.02	3.21
DECA	1	1	1	2	1	1	1	1	1
%P	0.5	6	2	-	8	0.5	0.5	8	



	IQG	DepPN	DepPM	DepPD	TMD	DepPS	GPD	IPP	AOL	EGS
DEP	31.9	-0.36	1.69	7.63	5.78	18.33	10.70	-29.72	2.02	3.21
TOP	1		22	9	11	4	3	1	12	0.5
CLASSE	E									



	MGTe	MP120	DP210	DP450	DAOL	DACAB	DSTAY	D3P	MGTe_CR
DEP	20.37	1.4	8.3	18.8	1.9	0.7	86.7	82.3	21.5
TOP	10	32	15	10	16	3	4	15	9

LOTE 7  
INDIVIDUAL

CUTOLO  
AGROPECUÁRIA



CLIQUE PARA VER



O VÍDEO DO LOTE

PHOC 2411  
**2411 PHOC**

PESO 847 • NASCIMENTO 20/07/2022 • CE 37

ZAPP BEABISA

AVESSO TE DA BELA

DAMASCO MAT.

OLATZ FIV STM

AMBOA MAT.

MAGDA FIV STM

US  
DGT  
PROFIT

AOL	EGS	MAR
118.6	4.73	3.23



	iABCZg	PD-ED	PS-ED	PM-EM	TMD	IPPg	STAYg	AOLg	ACABg
DEP	27.08	7.6	20.07	5.35	9.7	-26.4	41.0	2.93	0.88
DECA	1	1	1	1	1	1	1	1	2
%P	0.5	6	1	0.1	0.5	2	0.5	2	



	IQG	DepPN	DepPM	DepPD	TMD	DepPS	GPD	IPP	AOL	EGS
DEP	35.3	0.91	5.35	7.61	9.65	20.06	12.45	-26.37	2.93	0.88
TOP	0.5		0.5	9	1	2	1	2	3	23
CLASSE	E									



	MGTe	MP120	DP210	DP450	DAOL	DACAB	DSTAY	D3P	MGTe_CR
DEP	26.05	5.4	10.5	19.2	3.0	0.5	93.0	89.2	28.6
TOP	3	1	8	9	7	5	0.5	2	1

LOTE 8

INDIVIDUAL

CUTOLO  
AGROPECUÁRIA



CLIQUE PARA VER



O VÍDEO DO LOTE

PHOC 2586

2586 PHOC

PESO 779 • NASCIMENTO 05/09/2022 • CE 36

LEGAL DA BELA

CALIBRE FIV CAMPARINO

STAFF DA BELA

1923 PHOC

MACIA DA BELA

LEIA STM

US  
DGT  
PROFIT

AOL	EGS	MAR
109.8	4.73	2.48



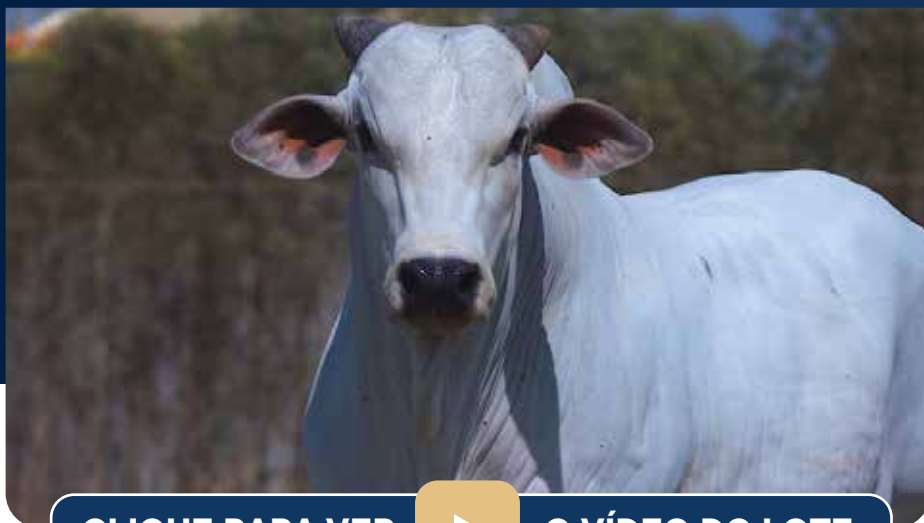
	iABCZg	PD-ED	PS-ED	PM-EM	TMD	IPPg	STAYg	AOLg	ACABg
DEP	29.32	12.1	25.80	0.03	6.3	-37.1	42.9	3.31	1.06
DECA	1	1	1	6	1	1	1	1	2
%P	0.1	0.5	0.1	-	6	0.1	0.1	1	



	IQG	DepPN	DepPM	DepPD	TMD	DepPS	GPD	IPP	AOL	EGS
DEP	32.1	0.77	0.03	12.10	6.27	25.80	13.70	-37.08	3.31	1.06
TOP	1		58	1	9	0.5	0.5	0.1	2	19
CLASSE	E									



	MGTe	MP120	DP210	DP450	DAOL	DACAB	DSTAY	D3P	MGTe_CR
DEP	23.36	0.5	14.0	26.0	3.3	0.1	85.6	80.5	23.2
TOP	5	57	3	3	5	27	5	21	6



CLIQUE PARA VER



O VÍDEO DO LOTE

PHOC 2928  
**2928 PHOC**

PESO 719 • NASCIMENTO 02/12/2022 • CE 39

RAMBO DA MN

C8288 DA MN

GALAPAGO TE DA BELA

LABAMBA STM

JURADA DA BONS.

DL4788 STM



AOL	EGS	MAR
113.2	4.73	3.08



	iABCZg	PD-ED	PS-ED	PM-EM	TMD	IPPg	STAYg	AOLg	ACABg
DEP	33.1 <sup>5</sup>	12.9	21.42	6.29	14.1	-20.7	44.5	4.01	1.97
DECA	1	1	1	1	1	1	1	1	1
%P	0.1	0.5	1	0.1	0.1	5	0.1	0.1	



	IQG	DepPN	DepPM	DepPD	TMD	DepPS	GPD	IPP	AOL	EGS
DEP	40.4	0.36	6.29	12.87	14.13	21.41	8.55	-20.66	4.01	1.97
TOP	0.1		0.1	0.5	0.1	2	7	6	0.5	5
CLASSE	E									



	MGTe	MP120	DP210	DP450	DAOL	DACAB	DSTAY	D3P	MGTe_CR
DEP	26.72	6.51 <sup>1</sup>	12.5	23.3	5.7	0.5	87.4	77.3	25.9
TOP	2	0.5	5	5	0.5	6	3	34	3

# LOTE 10

INDIVIDUAL



CLIQUE PARA VER



O VÍDEO DO LOTE

PHOC 2903

## 2903 FIV PHOC

PESO  
765

NASCIMENTO  
22/11/2022

CE  
37

REM FUSCAO

REM ARMADOR

REM IMPAR FIV GENETICA ADITIVA

OPALINA STM

REM VOTUPORANGA

INTRUSA STM



AOL	EGS	MAR
115.8	8.05 <sup>3</sup>	3.19



	iABCZg	PD-ED	PS-ED	PM-EM	TMD	IPPg	STAYg	AOLg	ACABg
DEP	30.69	9.8	20.17	0.06	5.7	-33.0	42.9	4.43	6.31 <sup>1</sup>
DECA	1	1	1	6	1	1	1	1	1
%P	0.1	2	1	-	8	0.5	0.1	0.1	



	IQG	DepPN	DepPM	DepPD	TMD	DepPS	GPD	IPP	AOL	EGS
DEP	40.5 <sup>5</sup>	0.36	0.06	9.75	5.65	20.17	10.42	-33.00	4.43	6.32
TOP	0.1		57	3	12	2	3	0.5	0.5	0.1
CLASSE	E									



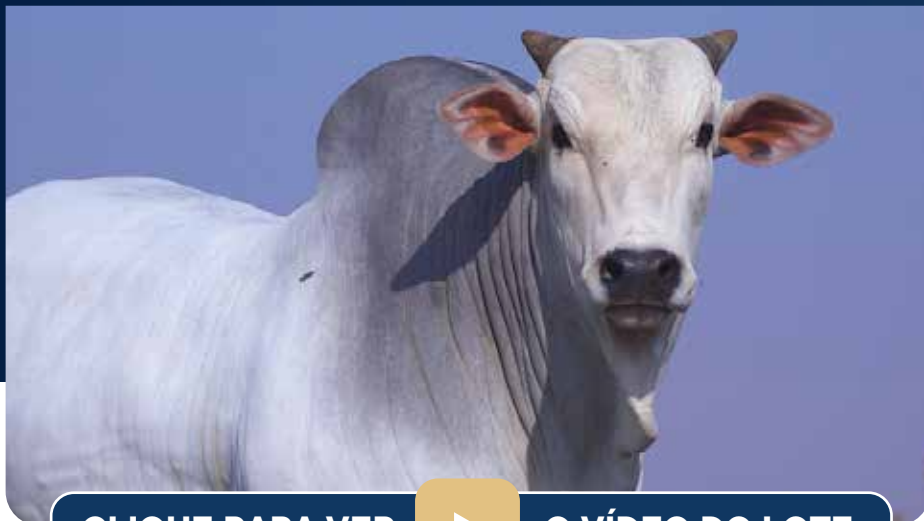
	MGTe	MP120	DP210	DP450	DAOL	DACAB	DSTAY	D3P	MGTe_CR
DEP	23.86	1.6	10.7	21.5	4.3	1.0 <sup>2</sup>	86.7	80.8	22.9
TOP	5	28	8	6	2	0.5	4	20	6

LOTE

11

INDIVIDUAL

CUTOLO  
AGROPECUÁRIA



CLIQUE PARA VER



O VÍDEO DO LOTE

PHOC 2817

2817 FIV PHOC

PESO 843 • NASCIMENTO 20/10/2022 • CE 43

B5968 FIV DA S.NICE

GALAPAGO TE DA BELA

CARBONO FIV DA S.NICE

NANA STM

B6444 DA S.NICE

INFINITA STM

US  
DGT  
PROFIT

AOL	EGS	MAR
123.7	7.09	3.92 <sup>3</sup>



	iABCZg	PD-ED	PS-ED	PM-EM	TMD	IPPg	STAYg	AOLg	ACABg
DEP	26.81	14.1	25.73	3.12	9.8	-22.6	36.5	4.86	1.71
DECA	1	1	1	1	1	1	1	1	1
%P	0.5	0.1	0.1	4	0.5	3	8	0.1	



	IQG	DepPN	DepPM	DepPD	TMD	DepPS	GPD	IPP	AOL	EGS
DEP	32.2	1.09	3.12	14.05	9.82	25.73	11.67	-22.59	4.86	1.71
TOP	1		6	0.5	1	0.5	2	4	0.1	7
CLASSE	E									



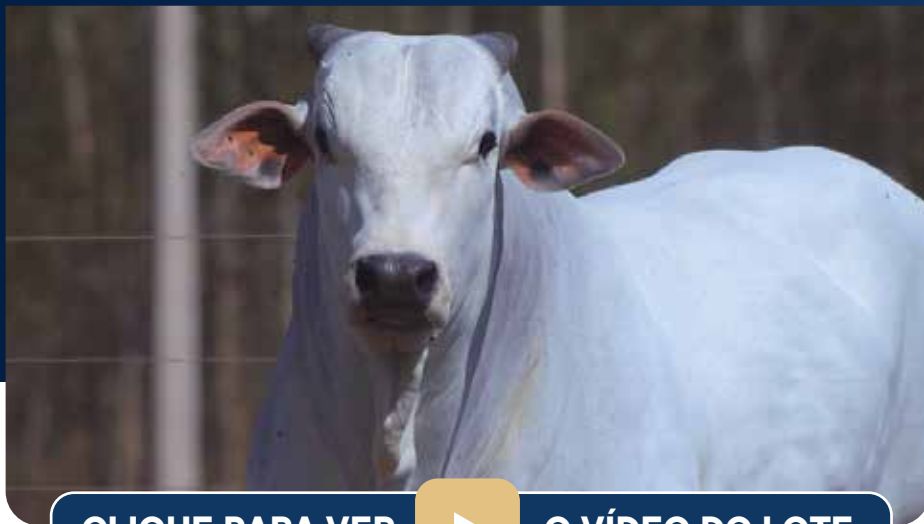
	MGTe	MP120	DP210	DP450	DAOL	DACAB	DSTAY	D3P	MGTe_CR
DEP	24.53	2.3	14.7	24.8	5.2	-0.1	80.6	76.2	23.6
TOP	4	16	3	4	1	65	12	39	5

LOTE

12

INDIVIDUAL

CUTOLO  
AGROPECUÁRIA



CLIQUE PARA VER



O VÍDEO DO LOTE

PHOC 2860

2860 FIV PHOC

PESO  
715

NASCIMENTO  
04/11/2022

CE  
41

B5968 FIV DA S.NICE

GALAPAGO TE DA BELA

CARBONO FIV DA S.NICE

NANA STM

B6444 DA S.NICE

INFINITA STM

US  
DGT  
PROFIT

AOL	EGS	MAR
96.5	7.09	3.21



	iABCZg	PD-ED	PS-ED	PM-EM	TMD	IPPg	STAYg	AOLg	ACABg
DEP	21.69	8.8	18.32	0.49	5.4	-17.7	39.8	1.22	2.30
DECA	1	1	1	5	1	1	1	3	1
%P	1	3	2	-	10	8	2	-	-



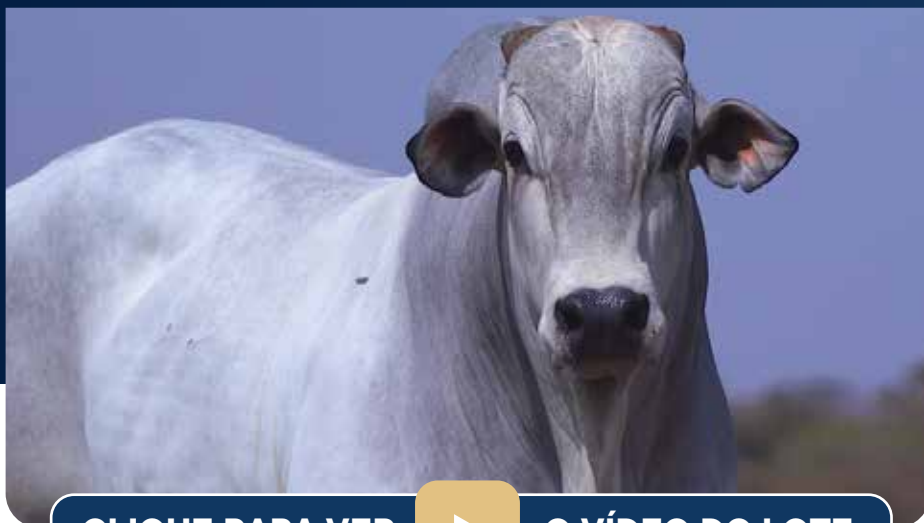
	IQG	DepPN	DepPM	DepPD	TMD	DepPS	GPD	IPP	AOL	EGS
DEP	28.1	0.02	0.49	8.84	5.39	18.32	9.48	-17.68	1.22	2.30
TOP	2		47	5	13	4	5	10	28	3
CLASSE	E									



	MGTe	MP120	DP210	DP450	DAOL	DACAB	DSTAY	D3P	MGTe_CR
DEP	19.35	0.6	9.5	20.2	1.9	0.7	82.6	75.1	19.8
TOP	12	54	11	8	16	3	9	44	12

LOTE **14**

INDIVIDUAL



CLIQUE PARA VER



O VÍDEO DO LOTE

PHOC 2579

**2579 PHOC**

PESO **737** • NASCIMENTO **05/09/2022** • CE **39**

AVESSO TE DA BELA

RAIN

MUSCAT FIV STM

NOA STM

REM VATINA

LUKLA FIV STM



AOL	EGS	MAR
112.4	7.10	3.45



	iABCZg	PD-ED	PS-ED	PM-EM	TMD	IPPg	STAYg	AOLg	ACABg
DEP	20.12	6.6	16.24	3.89	8.9	-21.7	36.8	1.78	0.83
DECA	1	1	1	1	1	1	1	2	3
%P	2	10	4	2	1	4	7	-	



	IQG	DepPN	DepPM	DepPD	TMD	DepPS	GPD	IPP	AOL	EGS
DEP	25.4	0.69	3.89	6.61	8.89	16.24	9.63	-21.73	1.78	0.83
TOP	4		2	14	2	6	4	5	15	24
CLASSE	E									

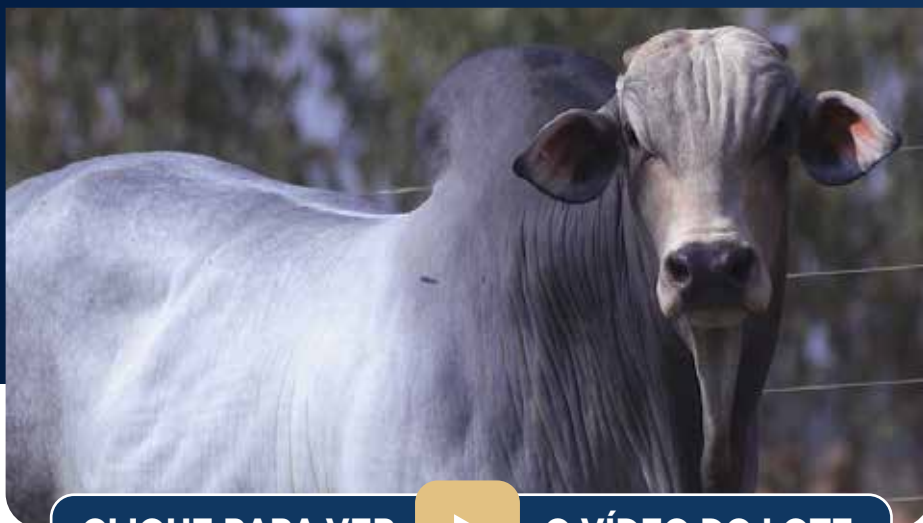


	MGTe	MP120	DP210	DP450	DAOL	DACAB	DSTAY	D3P	MGTe_CR
DEP	19.39	1.1	6.4	15.4	0.6	0.3	88.2	92.1	22.6
TOP	12	40	23	16	36	10	3	0.5	7



# LOTE 15

INDIVIDUAL



CLIQUE PARA VER



O VÍDEO DO LOTE

## PHOC 2595 2595 FIV PHOC

PESO 791 • NASCIMENTO 05/09/2022 • CE 40

AVESSO TE DA BELA

REM ARMADOR

MUSCAT FIV STM



NAVA FIV STM

REM VATINA

JULIET STM



AOL	EGS	MAR
115.8	5.67	3.56



	iABCZg	PD-ED	PS-ED	PM-EM	TMD	IPPg	STAYg	AOLg	ACABg
DEP	22.64	8.1	15.78	-0.79	3.2	-36.8	44.4	-0.17	-1.22
DECA	1	1	1	8	3	1	1	7	9
%P	1	5	4	-	-	0.1	0.1	-	-



	IQG	DepPN	DepPM	DepPD	TMD	DepPS	GPD	IPP	AOL	EGS
DEP	21.0	0.33	-0.79	8.12	3.15	15.78	7.66	-36.80	-0.17	-1.22
TOP	8		75	7	33	7	10	0.1	68	87
CLASSE	E									



	MGTe	MP120	DP210	DP450	DAOL	DACAB	DSTAY	D3P	MGTe_CR
DEP	19.59	-0.3	8.0	16.2	0.1	0.4	87.4	94.4	23.2
TOP	11	80	16	14	57	9	4	0.1	6

# LOTE 16

INDIVIDUAL



CLIQUE PARA VER



O VÍDEO DO LOTE

PHOC 2459

## 2459 PHOC

PESO 765 • NASCIMENTO 10/08/2022 • CE 39

REM DITADO

REM DULLDOG

REM HURACAN GENETICA ADITIVA

1675 PHOC

REM FRANCANCA FIV

KATANGA STM



AOL	EGS	MAR
116.8	7.09	3.90 <sup>4</sup>



	iABCZg	PD-ED	PS-ED	PM-EM	TMD	IPPg	STAYg	AOLg	ACABg
DEP	25.43	6.6	15.66	0.70	4.9	-24.0	43.1	3.22	3.36
DECA	1	1	1	4	2	1	1	1	1
%P	0.5	10	5	-	-	2	0.1	1	



	IQG	DepPN	DepPM	DepPD	TMD	DepPS	GPD	IPP	AOL	EGS
DEP	35.3	-0.31	0.70	6.64	4.86	15.66	9.02	-24.00	3.22	3.36
TOP	0.5		42	14	17	7	6	3	2	0.5
CLASSE	E									



	MGTe	MP120	DP210	DP450	DAOL	DACAB	DSTAY	D3P	MGTe_CR
DEP	19.63	2.0	6.1	14.1	2.3	0.5	85.8	86.8	21.6
TOP	11	20	24	19	12	6	5	5	8

LOTE

17

INDIVIDUAL

CUTOLO  
AGROPECUÁRIA



CLIQUE PARA VER



O VÍDEO DO LOTE

PHOC 2467

2467 PHOC

PESO 773 • NASCIMENTO 10/08/2022 • CE 37

REM DITADO

QUARUP BONS

REM HURACAN GENETICA ADITIVA

1398 FIV PHOC

REM FRANCANIA FIV

ACACIA MAT.

US  
DGT  
PROFIT

AOL	EGS	MAR
127.1 <sup>3</sup>	6.61	3.66



	iABCZg	PD-ED	PS-ED	PM-EM	TMD	IPPg	STAYg	AOLg	ACABg
DEP	24.24	7.3	19.35	-0.03	3.6	-18.3	42.0	6.41 <sup>3</sup>	1.81
DECA	1	1	1	6	3	1	1	1	1
%P	0.5	7	2	-	-	7	0.5	0.1	



	IQG	DepPN	DepPM	DepPD	TMD	DepPS	GPD	IPP	AOL	EGS
DEP	32.6	-0.47	-0.03	7.32	3.59	19.35	12.03	-18.29	6.42	1.81
TOP	1		59	10	28	3	2	9	0.1	6
CLASSE	E									



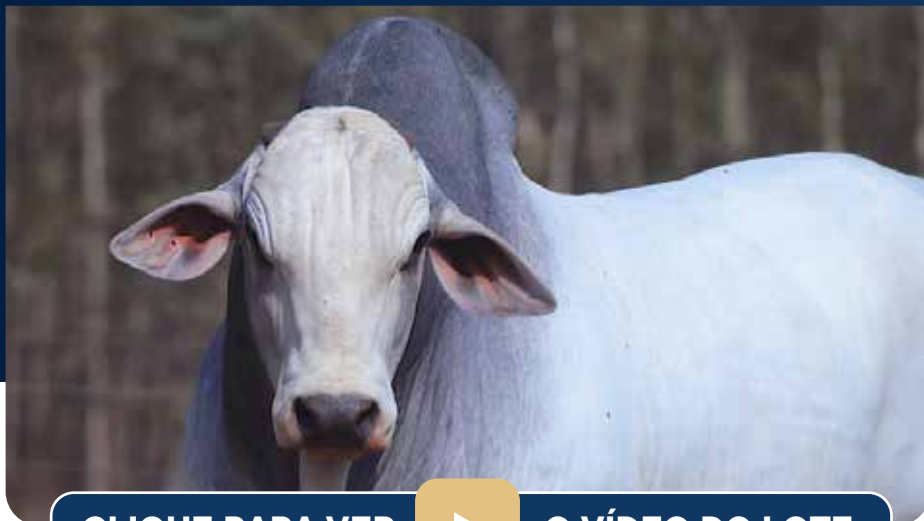
	MGTe	MP120	DP210	DP450	DAOL	DACAB	DSTAY	D3P	MGTe_CR
DEP	22.99	1.2	9.7	20.7	6.4 <sup>3</sup>	0.0	86.9	80.3	21.1
TOP	6	36	10	7	0.1	54	4	22	9

LOTE

18

INDIVIDUAL

CUTOLO  
AGROPECUÁRIA



CLIQUE PARA VER



O VÍDEO DO LOTE

PHOC 2834

2834 FIV PHOC

PESO 823 • NASCIMENTO 22/10/2022 • CE 36

REM ARMADOR

MANDARIN MAT.

BRUTAO FIV DA 3A

KA A FIV STM

4275 FIV DA 3A

PADANA MAT.

US  
DGT  
PROFIT

AOL	EGS	MAR
106.3	4.26	2.23



	iABCZg	PD-ED	PS-ED	PM-EM	TMD	IPPg	STAYg	AOLg	ACABg
DEP	23.15	13.3	21.56	1.63	8.2	-23.3	38.3	2.81	-0.29
DECA	1	1	1	2	1	1	1	1	7
%P	1	0.1	1	-	2	3	3	2	



	IQG	DepPN	DepPM	DepPD	TMD	DepPS	GPD	IPP	AOL	EGS
DEP	24.8	0.57	1.63	13.28	8.16	21.56	8.28	-23.34	2.81	-0.29
TOP	4		23	0.5	3	2	8	4	4	62
CLASSE	E									



	MGTe	MP120	DP210	DP450	DAOL	DACAB	DSTAY	D3P	MGTe_CR
DEP	20.99	2.7	12.1	21.0	3.3	0.2	85.5	69.2	21.0
TOP	9	10	5	7	5	15	5	66	10

LOTE

19

INDIVIDUAL

CUTOLO  
AGROPECUÁRIA



CLIQUE PARA VER



O VÍDEO DO LOTE

PHOC 2880

2880 FIV PHOC

PESO  
753

NASCIMENTO  
17/11/2022

CE  
40

B5968 FIV DA S.NICE

SHERLOCK MAT.

CARBONO FIV DA S.NICE

OIUKI STM

B6444 DA S.NICE

JUNICA STM

US  
DGT  
PROFIT

AOL EGS MAR

103.5 6.62 3.48



	iABCZg	PD-ED	PS-ED	PM-EM	TMD	IPPg	STAYg	AOLg	ACABg
DEP	24.49	8.1	17.24	4.72	10.0	-18.8	38.7	2.44	4.26 <sup>3</sup>
DECA	1	1	1	1	1	1	1	1	1
%P	0.5	5	3	0.5	-	6	3	4	



	IQG	DepPN	DepPM	DepPD	TMD	DepPS	GPD	IPP	AOL	EGS
DEP	36.9	-0.19	4.72	8.08	10.03	17.24	9.15	-18.75	2.45	4.26
TOP	0.5		0.5	7	1	5	5	8	7	0.1
CLASSE	E									



	MGTe	MP120	DP210	DP450	DAOL	DACAB	DSTAY	D3P	MGTe_CR
DEP	21.69	2.4	8.5	19.1	2.1	0.8	90.7	80.3	22.8
TOP	8	12	14	9	13	2	2	22	6

# LOTE 20

INDIVIDUAL



CLIQUE PARA VER



O VÍDEO DO LOTE

PHOC 2855

## 2855 FIV PHOC

PESO 747 • NASCIMENTO 03/11/2022 • CE 36

QUARUP BONS

REM UINTELO

ESTORIL MAT.

JULIET STM

BARAVAH MAT.

REM VARUNAKA



AOL	EGS	MAR
106.1	5.68	3.28



	iABCZg	PD-ED	PS-ED	PM-EM	TMD	IPPg	STAYg	AOLg	ACABg
DEP	24.39	6.4	17.62	4.23	7.3	-31.8	41.7	3.33	-0.55
DECA	1	2	1	1	1	1	1	1	7
%P	0.5	-	3	1	3	0.5	0.5	1	



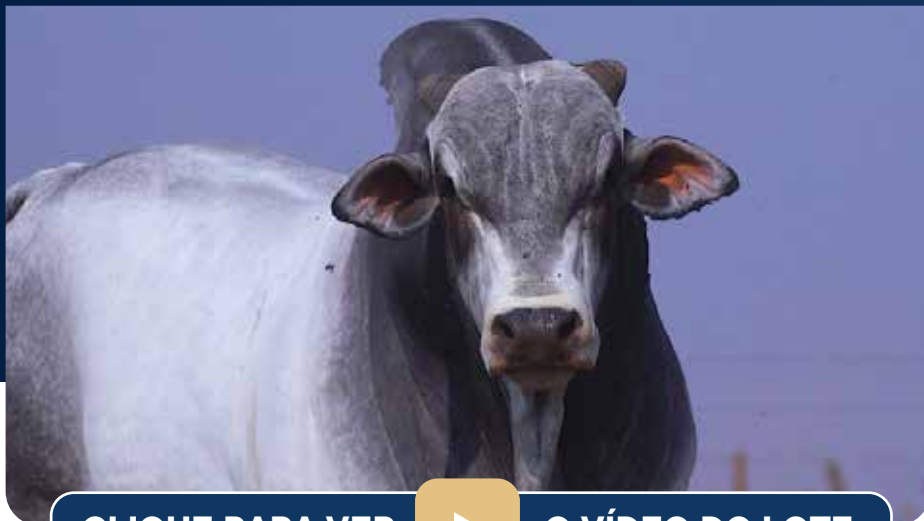
	IQG	DepPN	DepPM	DepPD	TMD	DepPS	GPD	IPP	AOL	EGS
DEP	31.9	-0.04	4.23	6.37	7.30	17.61	11.24	-31.80	3.33	-0.55
TOP	1		2	15	5	4	2	0.5	2	71
CLASSE	E									



	MGTe	MP120	DP210	DP450	DAOL	DACAB	DSTAY	D3P	MGTe_CR
DEP	21.86	3.2	7.1	16.5	3.9	0.2	89.0	85.7	22.9
TOP	7	7	20	14	3	18	2	6	6

# LOTE 21

INDIVIDUAL



CLIQUE PARA VER



O VÍDEO DO LOTE

PHOC 2711

## 2711 FIV PHOC

PESO 851 • NASCIMENTO 28/09/2022 • CE 44

REM FUSCAO

BENIN MAT.

REM IMPAR FIV GENETICA ADITIVA



1602 FIV PHOC

REM VOTUPORANGA

BAHIA MAT.



AOL	EGS	MAR
118.8	7.10	2.95



	iABCZg	PD-ED	PS-ED	PM-EM	TMD	IPPg	STAYg	AOLg	ACABg
DEP	27.99	11.8	26.64	3.11	9.8	-11.3	39.8	3.70	2.63
DECA	1	1	1	1	1	2	1	1	1
%P	0.1	0.5	0.1	4	0.5	-	2	0.5	



	IQG	DepPN	DepPM	DepPD	TMD	DepPS	GPD	IPP	AOL	EGS
DEP	38.4	1.17	3.11	11.79	9.83	26.64	14.84	-11.33	3.70	2.63
TOP	0.5		6	1	1	0.5	0.5	24	1	2
CLASSE	E									



	MGTe	MP120	DP210	DP450	DAOL	DACAB	DSTAY	D3P	MGTe_CR
DEP	26.1	2.6	14.6	27.8	4.1	0.5	83.0	81.9	25.4
TOP	3	12	3	2	3	5	8	16	3

# LOTE 22

INDIVIDUAL



CLIQUE PARA VER



O VÍDEO DO LOTE

PHOC 2895

## 2895 FIV PHOC

PESO  
753

NASCIMENTO  
20/11/2022

CE  
35

B5968 FIV DA S.NICE

REM RICKET

CARBONO FIV DA S.NICE



REM VARUNAKA

B6444 DA S.NICE

REM TURPILA



AOL	EGS	MAR
108.4	6.15	3.68



	iABCZg	PD-ED	PS-ED	PM-EM	TMD	IPPg	STAYg	AOLg	ACABg
DEP	31.37	13.9	28.70 <sup>3</sup>	6.40 <sup>3</sup>	15.5	-24.5	39.8	3.78	0.63
DECA	1	1	1	1	1	1	1	1	3
%P	0.1	0.1	0.1	0.1	0.1	2	2	0.5	



	IQG	DepPN	DepPM	DepPD	TMD	DepPS	GPD	IPP	AOL	EGS
DEP	40.8 <sup>4</sup>	0.16	6.39 <sup>3</sup>	13.87	15.53	28.69 <sup>3</sup>	14.83	-24.48	3.78	0.63
TOP	0.1		0.1	0.5	0.1	0.1	0.5	3	1	30
CLASSE	E									



	MGTe	MP120	DP210	DP450	DAOL	DACAB	DSTAY	D3P	MGTe_CR
DEP	26.71	5.1	14.7	29.1	3.6	-0.1	86.7	81.8	27.2
TOP	2	1	3	2	4	67	4	16	2



# LOTE 23

INDIVIDUAL



CLIQUE PARA VER



O VÍDEO DO LOTE

PHOC 2453

## 2453 PHOC

PESO 841 • NASCIMENTO 06/08/2022 • CE 43

REM ARMADOR

QUARUP BONS

OSIRIS FIV STM



1595 FIV PHOC

LAUREA STM

BENEDITA MAT.



AOL	EGS	MAR
113.9	6.62	3.80



	iABCZg	PD-ED	PS-ED	PM-EM	TMD	IPPg	STAYg	AOLg	ACABg
DEP	30.46	14.8	28.79 <sup>2</sup>	4.69	12.6	-24.3	38.6	2.20	4.30 <sup>2</sup>
DECA	1	1	1	1	1	1	1	1	1
%P	0.1	0.1	0.1	0.5	0.1	2	3	6	



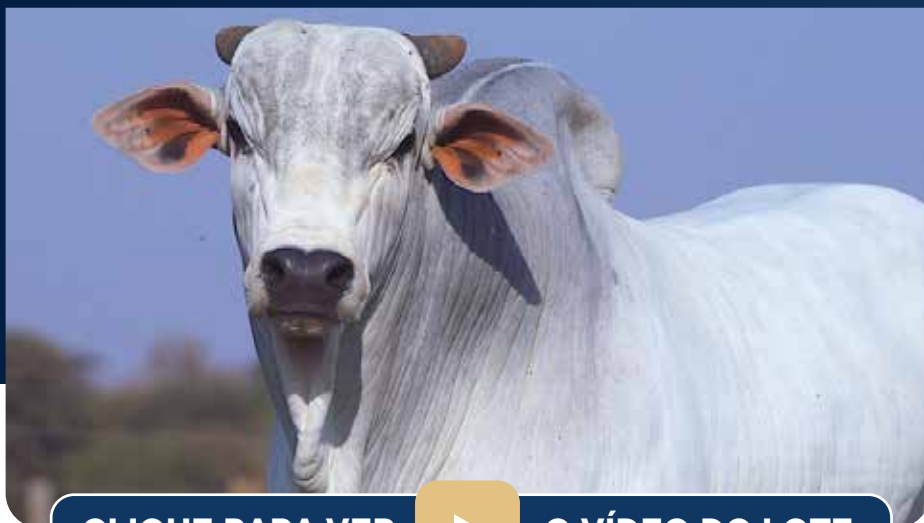
	IQG	DepPN	DepPM	DepPD	TMD	DepPS	GPD	IPP	AOL	EGS
DEP	40.1	0.77	4.69	14.77	12.59	28.78 <sup>2</sup>	14.02	-24.26	2.20	4.31
TOP	0.1		1	0.1	0.1	0.1	0.5	3	9	0.1
CLASSE	E									



	MGTe	MP120	DP210	DP450	DAOL	DACAB	DSTAY	D3P	MGTe_CR
DEP	27.95 <sup>5</sup>	5.0	16.3	32.5	2.5	0.4	87.8	82.7	28.5
TOP	2	2	2	0.5	10	7	3	14	1

# LOTE 24

INDIVIDUAL



CLIQUE PARA VER



O VÍDEO DO LOTE

PHOC 2393

## 2393 PHOC

PESO **711** • NASCIMENTO **14/07/2022** • CE **36**

REM ARMADOR

RAIN

OSIRIS FIV STM

OXSANA FIV STM

LAUREA STM

KRISTEL STM



AOL	EGS	MAR
109.0	3.78	3.11



	iABCZg	PD-ED	PS-ED	PM-EM	TMD	IPPg	STAYg	AOLg	ACABg
DEP	32.09	8.9	18.60	3.31	9.2	-39.91 <sup>3</sup>	47.2 <sup>1</sup>	2.18	0.61
DECA	1	1	1	1	1	1	1	1	3
%P	0.1	3	2	3	1	0.1	0.1	6	



	IQG	DepPN	DepPM	DepPD	TMD	DepPS	GPD	IPP	AOL	EGS
DEP	36.9	0.10	3.31	8.87	9.17	18.60	9.72	-39.91	2.18	0.61
TOP	0.5		4	5	2	3	4	0.1	9	31
CLASSE	E									



	MGTe	MP120	DP210	DP450	DAOL	DACAB	DSTAY	D3P	MGTe_CR
DEP	21.58	3.8	9.6	16.5	0.9	0.1	90.8	87.1	25.5
TOP	8	4	11	14	30	29	1	4	3

# LOTE 25

INDIVIDUAL



CLIQUE PARA VER



O VÍDEO DO LOTE

PHOC 2885

## 2885 FIV PHOC

PESO  
**787**

NASCIMENTO  
**18/11/2022**

CE  
**43**

REM DANUT

REM ARMADOR

INVENCIVEL DA HORA



NOVA FIV STM

2272 DA HORA

JULIET STM



AOL EGS MAR

111.6 5.67 3.71



	iABCZg	PD-ED	PS-ED	PM-EM	TMD	IPPg	STAYg	AOLg	ACABg
DEP	32.25	13.5	22.03	4.20	12.0	-31.0	44.6	3.59	0.28
DECA	1	1	1	1	1	1	1	1	4
%P	0.1	0.1	0.5	1	0.1	0.5	0.1	0.5	



	IQG	DepPN	DepPM	DepPD	TMD	DepPS	GPD	IPP	AOL	EGS
DEP	39.3	-0.18	4.20	13.51	12.00	22.03	8.52	-31.01	3.59	0.28
TOP	0.5		2	0.5	0.5	1	7	0.5	1	42
CLASSE	E									



	MGTe	MP120	DP210	DP450	DAOL	DACAB	DSTAY	D3P	MGTe_CR
DEP	28.92 <sup>4</sup>	4.8	14.3	26.0	4.1	0.1	91.4	93.5	30.3 <sup>2</sup>
TOP	1	2	3	3	3	22	1	0.5	0.5

# LOTE 26

INDIVIDUAL



CLIQUE PARA VER



O VÍDEO DO LOTE

PHOC 2901

## 2901 FIV PHOC

PESO 771 • NASCIMENTO 21/11/2022 • CE 42

B5968 FIV DA S.NICE

REM TORIXOREU

CARBONO FIV DA S.NICE

LAILAN FIV STM

B6444 DA S.NICE

NAIKA MAT.



AOL	EGS	MAR
108.7	7.11	2.91



	iABCZg	PD-ED	PS-ED	PM-EM	TMD	IPPg	STAYg	AOLg	ACABg
DEP	22.39	14.3	26.46	0.34	7.9	-16.8	36.2	2.46	1.17
DECA	1	1	1	5	1	1	1	1	2
%P	1	0.1	0.1	-	2	9	9	4	



	IQG	DepPN	DepPM	DepPD	TMD	DepPS	GPD	IPP	AOL	EGS
DEP	25.1	1.23	0.34	14.27	7.89	26.46	12.19	-16.79	2.46	1.17
TOP	4		51	0.1	4	0.5	1	11	7	16
CLASSE	E									



	MGTe	MP120	DP210	DP450	DAOL	DACAB	DSTAY	D3P	MGTe_CR
DEP	21.23	-0.3	15.7	26.1	1.6	0.5	80.6	73.7	21.3
TOP	8	81	2	3	19	6	12	49	9

# LOTE 27

INDIVIDUAL



CLIQUE PARA VER



O VÍDEO DO LOTE

PHOC 2896

## 2896 FIV PHOC

PESO 809 • NASCIMENTO 20/11/2022 • CE 40

B5968 FIV DA S.NICE

REM TORIXOREU

CARBONO FIV DA S.NICE

LAILAN FIV STM

B6444 DA S.NICE

NAIKA MAT.



AOL	EGS	MAR
112.4	8.04	2.59



	iABCZg	PD-ED	PS-ED	PM-EM	TMD	IPPg	STAYg	AOLg	ACABg
DEP	22.88	9.9	25.64	1.71	7.5	-15.2	36.7	3.40	2.58
DECA	1	1	1	2	1	2	1	1	1
%P	1	2	0.1	-	3	-	7	1	



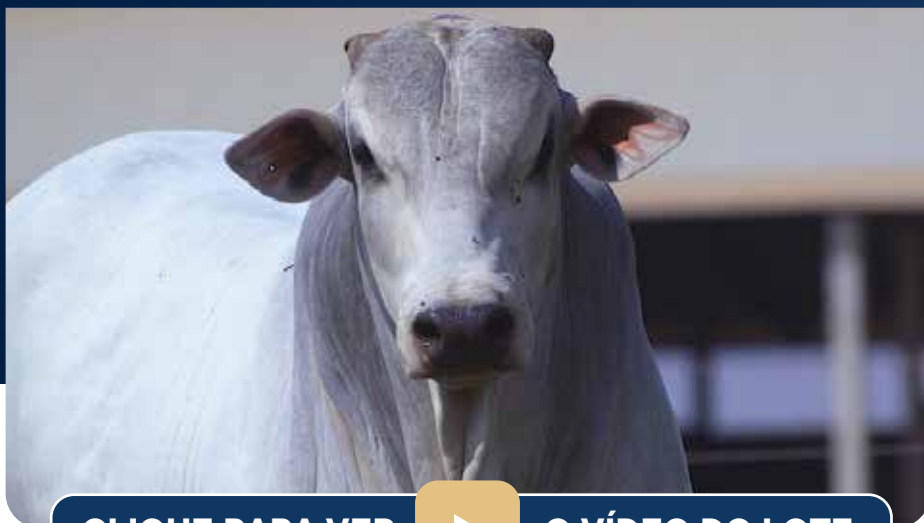
	IQG	DepPN	DepPM	DepPD	TMD	DepPS	GPD	IPP	AOL	EGS
DEP	30.7	0.43	1.71	9.93	7.49	25.64	15.70 <sup>1</sup>	-15.17	3.40	2.58
TOP	2		22	3	5	0.5	0.1	15	2	2
CLASSE	E									



	MGTe	MP120	DP210	DP450	DAOL	DACAB	DSTAY	D3P	MGTe_CR
DEP	20.59	0.9	10.9	27.5	4.1	0.4	78.3	69.5	17.8
TOP	9	44	8	2	3	9	16	65	17

# LOTE 28

INDIVIDUAL



CLIQUE PARA VER



O VÍDEO DO LOTE

PHOC 2560

## 2560 PHOC

PESO 757 • NASCIMENTO 04/09/2022 • CE 33

LEGAL DA BELA

BATMAN MAT.

STAFF DA BELA

1797 FIV PHOC

MACIA DA BELA

OLIVE STM



AOL	EGS	MAR
106.9	4.73	3.03



	iABCZg	PD-ED	PS-ED	PM-EM	TMD	IPPg	STAYg	AOLg	ACABg
DEP	28.43	9.4	22.94	4.29	10.0	-28.4	42.7	1.93	2.68
DECA	1	1	1	1	1	1	1	1	1
%P	0.1	2	0.5	1	0.5	1	0.1	9	



	IQG	DepPN	DepPM	DepPD	TMD	DepPS	GPD	IPP	AOL	EGS
DEP	36.3	0.26	4.29	9.43	10.03	22.94	13.52	-28.37	1.93	2.68
TOP	0.5		1	4	1	1	0.5	1	13	1
CLASSE	E									



	MGTe	MP120	DP210	DP450	DAOL	DACAB	DSTAY	D3P	MGTe_CR
DEP	21.73	4.0	13.2	25.9	2.1	0.0	83.7	71.3	22.2
TOP	7	3	4	3	14	36	8	59	7

# LOTE 29

INDIVIDUAL



CLIQUE PARA VER



O VÍDEO DO LOTE

PHOC 2809

## 2809 FIV PHOC

PESO 791 • NASCIMENTO 19/10/2022 • CE 47

B5968 FIV DA S.NICE

DIRIGIVEL COL

CARBONO FIV DA S.NICE

NADIA FIV STM

B6444 DA S.NICE

KAA FIV STM



AOL	EGS	MAR
89.4	7.57	3.17



	iABCZg	PD-ED	PS-ED	PM-EM	TMD	IPPg	STAYg	AOLg	ACABg
DEP	24.92	6.7	19.04	4.75	9.5	-19.6	40.5	2.59	1.39
DECA	1	1	1	1	1	1	1	1	1
%P	0.5	9	2	0.5	0.5	6	1	3	



	IQG	DepPN	DepPM	DepPD	TMD	DepPS	GPD	IPP	AOL	EGS
DEP	34.5	0.14	4.75	6.71	9.54	19.04	12.32	-19.56	2.59	1.39
TOP	0.5		0.5	13	1	3	1	7	5	12
CLASSE	E									



	MGTe	MP120	DP210	DP450	DAOL	DACAB	DSTAY	D3P	MGTe_CR
DEP	21.9	4.1	9.3	22.1	2.6	0.2	90.6	71.3	22.8
TOP	7	3	11	6	10	13	1	59	6

# LOTE 30

INDIVIDUAL



CLIQUE PARA VER



O VÍDEO DO LOTE

PHOC 2862

## 2862 FIV PHOC

PESO **883** • NASCIMENTO **04/11/2022** • CE **45**

B5968 FIV DA S.NICE

GALAPAGO TE DA BELA

CARBONO FIV DA S.NICE

NANA STM

B6444 DA S.NICE

INFINITA STM



AOL	EGS	MAR
114.6	7.10	3.85 <sup>5</sup>



	iABCZg	PD-ED	PS-ED	PM-EM	TMD	IPPg	STAYg	AOLg	ACABg
DEP	23.45	8.4	16.48	0.09	3.3	-26.8	42.0	2.62	2.22
DECA	1	1	1	6	3	1	1	1	1
%P	1	4	4	-	-	1	0.5	3	



	IQG	DepPN	DepPM	DepPD	TMD	DepPS	GPD	IPP	AOL	EGS
DEP	26.8	0.42	0.09	8.39	3.33	16.48	8.09	-26.75	2.62	2.22
TOP	3		56	6	31	6	8	2	5	3
CLASSE	E									



	MGTe	MP120	DP210	DP450	DAOL	DACAB	DSTAY	D3P	MGTe_CR
DEP	20.46	-0.9	11.7	17.7	2.8	0.0	87.6	79.0	21.9
TOP	10	91	6	12	8	49	3	27	8



# LOTE 31

INDIVIDUAL



CLIQUE PARA VER



O VÍDEO DO LOTE

PHOC 2450

## 2450 FIV PHOC

PESO 825 • NASCIMENTO 05/08/2022 • CE 40

REM ESPIAO007

GHETO FIV EUROPA

REM HOT GENETICA ADITIVA

1805 FIV PHOC

REM FESTYNHA

NITRICA STM



AOL	EGS	MAR
128.2 <sup>2</sup>	8.04	3.37



	iABCZg	PD-ED	PS-ED	PM-EM	TMD	IPPg	STAYg	AOLg	ACABg
DEP	16.61	5.9	12.71	2.52	5.5	-27.10	33.2	3.66	1.93
DECA	1	2	1	1	1	1	3	1	1
%P	-	-	-	-	-	-	-	-	-



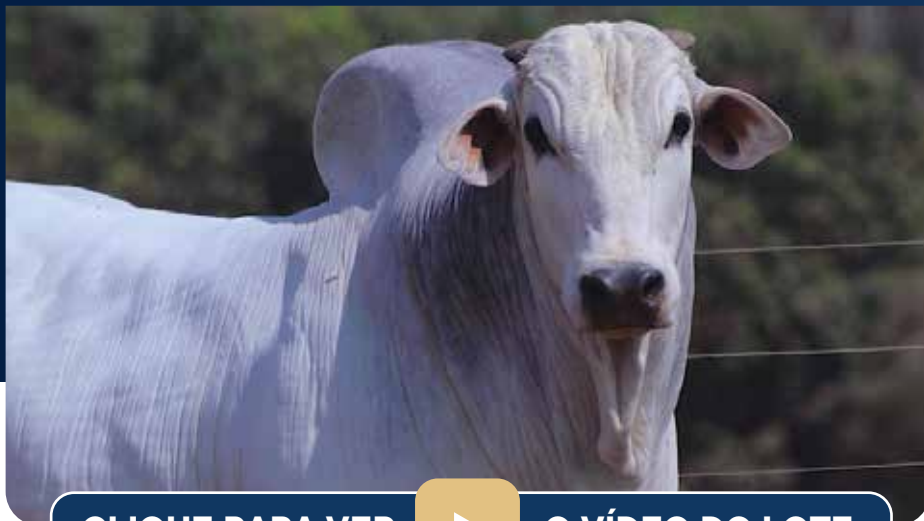
	IQG	DepPN	DepPM	DepPD	TMD	DepPS	GPD	IPP	AOL	EGS
DEP	-	-	-	-	-	-	-	-	-	-
TOP	-	-	-	-	-	-	-	-	-	-
CLASSE	-	-	-	-	-	-	-	-	-	-



	MGTe	MP120	DP210	DP450	DAOL	DACAB	DSTAY	D3P	MGTe_CR
DEP	25.2	2.8	10.8	23.0	4.7	0.9 <sup>3</sup>	77.5	90.2	24.3
TOP	3	9	8	5	2	1	18	2	4

# LOTE 32

INDIVIDUAL



CLIQUE PARA VER



O VÍDEO DO LOTE

PHOC 2533

## 2533 PHOC

PESO 779 • NASCIMENTO 29/08/2022 • CE 44

REM ESPIAO007

C8288 DA MN

REM HOT GENETICA ADITIVA

NATA STM

REM FESTYNHA

ISIS STM



AOL	EGS	MAR
122.2	6.14	3.47



	iABCZg	PD-ED	PS-ED	PM-EM	TMD	IPPg	STAYg	AOLg	ACABg
DEP	21.79	1.5	8.95	2.03	3.3	-36.1	41.5	2.91	1.95
DECA	1	6	3	2	3	1	1	1	1
%P	1	-	-	-	-	0.1	0.5	2	



	IQG	DepPN	DepPM	DepPD	TMD	DepPS	GPD	IPP	AOL	EGS
DEP	31.0	-0.70	2.03	1.50	3.27	8.95	7.45	-36.11	2.91	1.95
TOP	1		17	59	31	27	11	0.5	3	5
CLASSE	E									



	MGTe	MP120	DP210	DP450	DAOL	DACAB	DSTAY	D3P	MGTe_CR
DEP	18.66	1.8	2.8	10.5	2.9	0.3	78.5	96.0	20.7
TOP	13	24	48	30	7	11	15	0.1	10

# LOTE 33

INDIVIDUAL



CLIQUE PARA VER



O VÍDEO DO LOTE

PHOC 2684

## 2684 FIV PHOC

PESO 801 • NASCIMENTO 23/09/2022 • CE 42

REM ESPIAO007

BACKUP

REM HOT GENETICA ADITIVA

KRISTAL FIV STM

REM FESTYNHA

PARATI MAT.



AOL	EGS	MAR
126.7 <sup>5</sup>	4.73	3.01



	iABCZg	PD-ED	PS-ED	PM-EM	TMD	IPPg	STAYg	AOLg	ACABg
DEP	14.49	3.1	12.24	1.72	3.3	-33.6	35.1	3.60	-1.67
DECA	1	4	2	2	3	1	2	1	10
%P	8	-	-	-	-	0.5	-	0.5	



	IQG	DepPN	DepPM	DepPD	TMD	DepPS	GPD	IPP	AOL	EGS
DEP	21.2	0.28	1.72	3.11	3.27	12.24	9.13	-33.60	3.60	-1.67
TOP	7		21	42	31	15	5	0.5	1	94
CLASSE	E									



	MGTe	MP120	DP210	DP450	DAOL	DACAB	DSTAY	D3P	MGTe_CR
DEP	18.28	0.5	4.8	13.7	3.3	0.0	78.7	92.0	19.3
TOP	14	58	33	20	6	38	15	0.5	14

LOTE **34**

INDIVIDUAL

**CUTOLO**  
AGROPECUÁRIA



CLIQUE PARA VER



O VÍDEO DO LOTE

PHOC 2558

**2558 PHOC**

PESO **743** • NASCIMENTO **03/09/2022** • CE **40**

REM DITADO

CALIBRE FIV CAMPARINO

REM HURACAN GENETICA ADITIVA

1934 FIV PHOC

REM FRANCANIA FIV

NANCHENG FIV STM

**US**  
DGT  
PROFIT

AOL	EGS	MAR
110.0	4.72	3.57

**PMGZ**

	iABCZg	PD-ED	PS-ED	PM-EM	TMD	IPPg	STAYg	AOLg	ACABg
DEP	27.4	7.6	20.68	2.15	5.9	-40.27 <sup>2</sup>	40.8	3.32	2.33
DECA	1	1	1	2	1	1	1	1	1
%P	0.1	6	1	-	8	0.1	1	1	

**GENE PLUS**

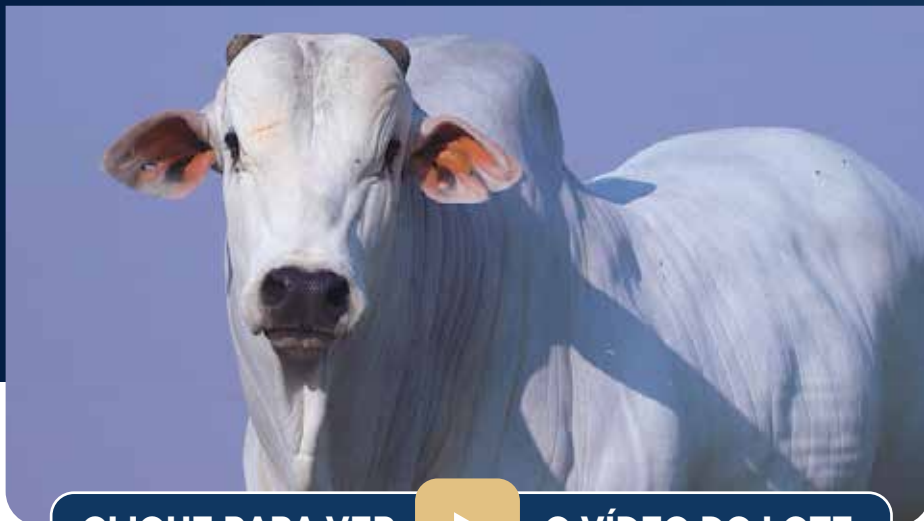
	IQG	DepPN	DepPM	DepPD	TMD	DepPS	GPD	IPP	AOL	EGS
DEP	35.8	-0.46	2.15	7.58	5.86	20.68	13.11	-40.27	3.32	2.33
TOP	0.5		15	9	11	2	0.5	0.1	2	3
CLASSE	E									

**ANCP**

	MGTe	MP120	DP210	DP450	DAOL	DACAB	DSTAY	D3P	MGTe_CR
DEP	24.82	2.5	9.7	20.8	3.3	0.4	90.5	92.2	26.4
TOP	4	13	10	7	5	8	2	0.5	2

# LOTE 35

INDIVIDUAL



CLIQUE PARA VER



O VÍDEO DO LOTE



PHOC 2759

## 2759 FIV PHOC

PESO 791 • NASCIMENTO 07/10/2022 • CE 40

B5968 FIV DA S.NICE

GALAPAGO TE DA BELA

CARBONO FIV DA S.NICE

NANA STM

B6444 DA S.NICE

INFINITA STM



AOL	EGS	MAR
101.9	4.73	3.29



	iABCZg	PD-ED	PS-ED	PM-EM	TMD	IPPg	STAYg	AOLg	ACABg
DEP	20.21	14.9 <sup>3</sup>	21.60	-0.22	6.4	-12.6	35.6	2.67	0.77
DECA	1	1	1	6	1	2	2	1	3
%P	2	0.1	1	-	6	-	-	3	



	IQG	DepPN	DepPM	DepPD	TMD	DepPS	GPD	IPP	AOL	EGS
DEP	20.7	0.74	-0.23	14.95	6.43	21.60	6.65	-12.55	2.67	0.77
TOP	8		64	0.1	8	2	15	21	5	26
CLASSE	E									



	MGTe	MP120	DP210	DP450	DAOL	DACAB	DSTAY	D3P	MGTe_CR
DEP	21.43	-1.4	18.5 <sup>2</sup>	24.0	2.5	-0.2	81.6	70.7	22.1
TOP	8	95	0.5	4	10	81	10	61	7

# LOTE 36

INDIVIDUAL



CLIQUE PARA VER



O VÍDEO DO LOTE

PHOC 2945

## 2945 PHOC

PESO 751 • NASCIMENTO 08/12/2022 • CE 37

MACEGAL DO IZ

REM DULLDOG

QUEDHAR FIV G.SALES

ONELIA STM

LORANE G.SALES

IXA STM



AOL	EGS	MAR
103.5	5.66	3.07



	iABCZg	PD-ED	PS-ED	PM-EM	TMD	IPPg	STAYg	AOLg	ACABg
DEP	23.88	11.0	18.87	3.57	10.0	-11.4	39.8	2.65	1.24
DECA	1	1	1	1	1	2	1	1	2
%P	0.5	1	2	2	0.5	-	2	3	



	IQG	DepPN	DepPM	DepPD	TMD	DepPS	GPD	IPP	AOL	EGS
DEP	28.6	0.37	3.57	10.96	10.00	18.87	7.91	-11.43	2.65	1.24
TOP	2		3	2	1	3	9	24	5	15
CLASSE	E									



	MGTe	MP120	DP210	DP450	DAOL	DACAB	DSTAY	D3P	MGTe_CR
DEP	19.07	2.0	12.3	17.6	2.8	0.6	84.2	63.3	19.3
TOP	12	20	5	12	8	4	7	84	14

# LOTE 37

INDIVIDUAL



CLIQUE PARA VER



O VÍDEO DO LOTE

PHOC 2947

## 2947 PHOC

PESO 775 • NASCIMENTO 08/12/2022 • CE 44

ZAPP BEABISA

BACKUP

DAMASCO MAT.

KRISTAL FIV STM

AMBOA MAT.

PARATI MAT.



AOL	EGS	MAR
112.0	3.78	3.33



	iABCZg	PD-ED	PS-ED	PM-EM	TMD	IPPg	STAYg	AOLg	ACABg
DEP	29.58	13.1	27.99	2.18	8.5	-31.2	40.6	5.94	-0.81
DECA	1	1	1	2	1	1	1	1	8
%P	0.1	0.1	0.1	-	2	0.5	1	0.1	



	IQG	DepPN	DepPM	DepPD	TMD	DepPS	GPD	IPP	AOL	EGS
DEP	35.2	0.94	2.18	13.09	8.47	27.99	14.89 <sup>3</sup>	-31.20	5.94	-0.81
TOP	0.5		14	0.5	3	0.1	0.5	0.5	0.1	78
CLASSE	E									



	MGTe	MP120	DP210	DP450	DAOL	DACAB	DSTAY	D3P	MGTe_CR
DEP	27.84	2.9	13.4	29.6	5.4	0.2	88.7	86.7	26.6
TOP	2	9	4	2	0.5	19	2	5	2

# LOTE 38

INDIVIDUAL



CLIQUE PARA VER



O VÍDEO DO LOTE

PHOC 2636

## 2636 FIV PHOC

PESO 825 • NASCIMENTO 06/09/2022 • CE 39

CORONEL DA MN

BACKUP

D7117 DA MN

KRISTAL FIV STM

C9643 DA MN

PARATI MAT.



AOL	EGS	MAR
125.2	5.68	3.23



	iABCZg	PD-ED	PS-ED	PM-EM	TMD	IPPg	STAYg	AOLg	ACABg
DEP	21.34	8.2	19.84	2.41	6.3	-23.4	37.8	3.44	1.16
DECA	1	1	1	1	1	1	1	1	2
%P	2	4	2	9	6	3	4	0.5	



	IQG	DepPN	DepPM	DepPD	TMD	DepPS	GPD	IPP	AOL	EGS
DEP	28.2	0.00	2.41	8.23	6.30	19.84	11.61	-23.42	3.44	1.16
TOP	2		12	7	9	2	2	4	2	16
CLASSE	E									

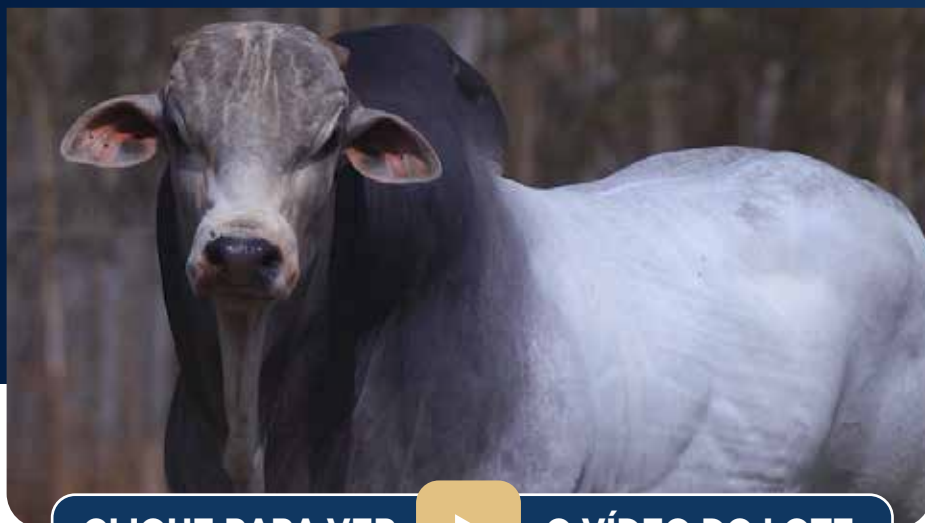


	MGTe	MP120	DP210	DP450	DAOL	DACAB	DSTAY	D3P	MGTe_CR
DEP	22.39	1.7	9.2	24.4	3.6	0.2	79.0	91.2	21.8
TOP	6	25	12	4	4	14	15	1	8



# LOTE 39

INDIVIDUAL



CLIQUE PARA VER



O VÍDEO DO LOTE

PHOC 2592

## 2592 FIV PHOC

PESO 747 • NASCIMENTO 05/09/2022 • CE 37

MACEGAL DO IZ

SHERLOCK MAT.

QUEDHAR FIV G.SALES

OCEANA FIV STM

LORANE G.SALES

INFINITA STM



AOL	EGS	MAR
115.3	4.26	3.21



	iABCZg	PD-ED	PS-ED	PM-EM	TMD	IPPg	STAYg	AOLg	ACABg
DEP	21.06	6.1	12.52	3.30	8.9	-9.0	39.0	4.63	1.58
DECA	1	2	1	1	1	3	1	1	1
%P	2	-	10	3	1	-	2	0.1	



	IQG	DepPN	DepPM	DepPD	TMD	DepPS	GPD	IPP	AOL	EGS
DEP	30.3	0.20	3.30	6.12	8.86	12.52	6.40	-9.03	4.63	1.58
TOP	2		5	17	2	14	16	32	0.1	9
CLASSE	E									



	MGTe	MP120	DP210	DP450	DAOL	DACAB	DSTAY	D3P	MGTe_CR
DEP	19.68	3.9	8.1	15.9	5.1	0.5	81.9	66.4	18.5
TOP	11	3	15	15	1	6	10	75	16

# LOTE 40

INDIVIDUAL



CLIQUE PARA VER



O VÍDEO DO LOTE

PHOC 2762

## 2762 FIV PHOC

PESO 803 • NASCIMENTO 07/10/2022 • CE 40

REM DANUT

REM ARMADOR

INVENCIVEL DA HORA

ODESSA FIV STM

2272 DA HORA

MIWA FIV STM



AOL	EGS	MAR
134.0 <sup>1</sup>	5.20	2.76



	iABCZg	PD-ED	PS-ED	PM-EM	TMD	IPPg	STAYg	AOLg	ACABg
DEP	38.8 <sup>1</sup>	14.4	29.62 <sup>1</sup>	6.22	14.1	-31.5	44.4	7.25 <sup>1</sup>	1.47
DECA	1	1	1	1	1	1	1	1	1
%P	0.1	0.1	0.1	0.1	0.1	0.5	0.1	0.1	



	IQG	DepPN	DepPM	DepPD	TMD	DepPS	GPD	IPP	AOL	EGS
DEP	52.1 <sup>1</sup>	0.47	6.22	14.36	14.14	29.62 <sup>1</sup>	15.25 <sup>2</sup>	-31.48	7.25	1.47
TOP	0.1		0.1	0.1	0.1	0.1	0.5	0.5	0.1	11
CLASSE	E									



	MGTe	MP120	DP210	DP450	DAOL	DACAB	DSTAY	D3P	MGTe_CR
DEP	34.69 <sup>1</sup>	6.47 <sup>2</sup>	16.4	31.0	7.3 <sup>1</sup>	0.2	94.8	95.4	34.0 <sup>1</sup>
TOP	0.1	0.5	1	1	0.1	18	0.1	0.1	0.1

# LOTE 41

INDIVIDUAL



CLIQUE PARA VER



O VÍDEO DO LOTE

PHOC 2409

## 2409 PHOC

PESO 797 • NASCIMENTO 20/07/2022 • CE 37

GANGES COL

GENERAL DA MN

MUKESH FIV COL

1430 DA PHOC



GAIMACA COL

NATURA FIV STM



AOL	EGS	MAR
112.8	5.67	2.68



	iABCZg	PD-ED	PS-ED	PM-EM	TMD	IPPg	STAYg	AOLg	ACABg
DEP	13.32	7.3	14.09	-0.48	3.3	-9.4	33.8	2.08	2.37
DECA	1	1	1	7	3	3	3	1	1
%P	10	7	7	-	-	-	-	7	



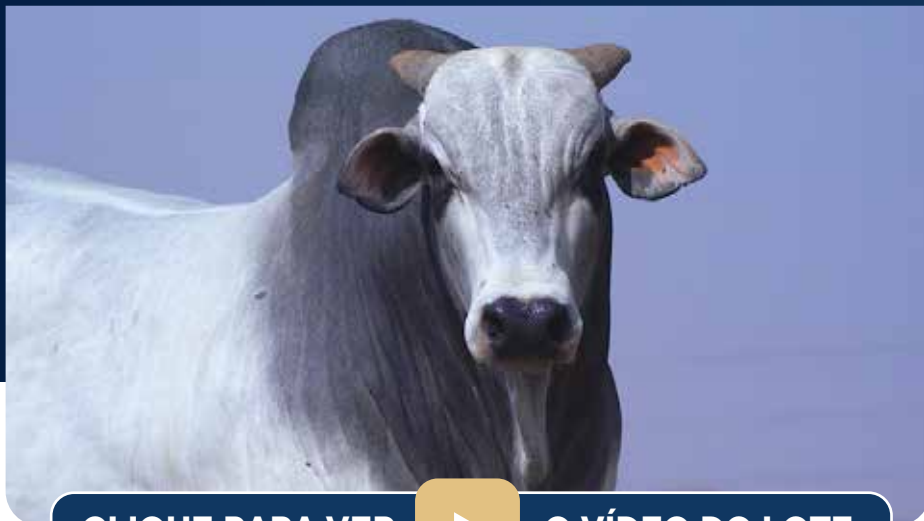
	IQG	DepPN	DepPM	DepPD	TMD	DepPS	GPD	IPP	AOL	EGS
DEP	17.5	0.54	-0.48	7.33	3.26	14.09	6.76	-9.41	2.08	2.37
TOP	13		69	10	31	10	14	30	11	2
CLASSE	E									



	MGTe	MP120	DP210	DP450	DAOL	DACAB	DSTAY	D3P	MGTe_CR
DEP	15.56	0.4	8.6	18.2	1.6	0.3	72.8	73.3	15.5
TOP	21	60	13	11	20	11	26	51	24

# LOTE 42

INDIVIDUAL



CLIQUE PARA VER



O VÍDEO DO LOTE

PHOC 2816

## 2816 FIV PHOC

PESO 791 • NASCIMENTO 20/10/2022 • CE 45

QUARUP BONS

REM ARMADOR

ESTORIL MAT.

ODESSA FIV STM

BARAVAH MAT.

MIWA FIV STM



AOL	EGS	MAR
116.7	5.20	2.74



	iABCZg	PD-ED	PS-ED	PM-EM	TMD	IPPg	STAYg	AOLg	ACABg
DEP	25.63	14.3	27.25	2.01	10.2	-34.4	32.7	6.71 <sup>2</sup>	0.46
DECA	1	1	1	2	1	1	4	1	4
%P	0.5	0.1	0.1	-	0.5	0.1	-	0.1	



	IQG	DepPN	DepPM	DepPD	TMD	DepPS	GPD	IPP	AOL	EGS
DEP	36.1	0.80	2.01	14.31	10.19	27.25	12.94	-34.36	6.72	0.46
TOP	0.5		17	0.1	1	0.5	1	0.5	0.1	36
CLASSE	E									



	MGTe	MP120	DP210	DP450	DAOL	DACAB	DSTAY	D3P	MGTe_CR
DEP	30.76 <sup>2</sup>	2.9	16.9 <sup>3</sup>	30.1	6.7 <sup>2</sup>	0.3	85.0	87.5	29.1
TOP	0.5	9	1	1	0.1	11	6	4	0.5

# LOTE 43

INDIVIDUAL



CLIQUE PARA VER



O VÍDEO DO LOTE

PHOC 2552

## 2552 PHOC

PESO 821 • NASCIMENTO 02/09/2022 • CE 37

THOR DA MN

REM ARMADOR

E1647 DA MN

OLAIA STM

D7606 DA MN

KAA FIV STM



AOL	EGS	MAR
113.7	4.26	2.86



	iABCZg	PD-ED	PS-ED	PM-EM	TMD	IPPg	STAYg	AOLg	ACABg
DEP	18.5	8.3	16.05	1.03	4.9	-27.9	38.0	1.62	-1.37
DECA	1	1	1	4	2	1	1	2	10
%P	3	4	4	-	-	1	4	-	-



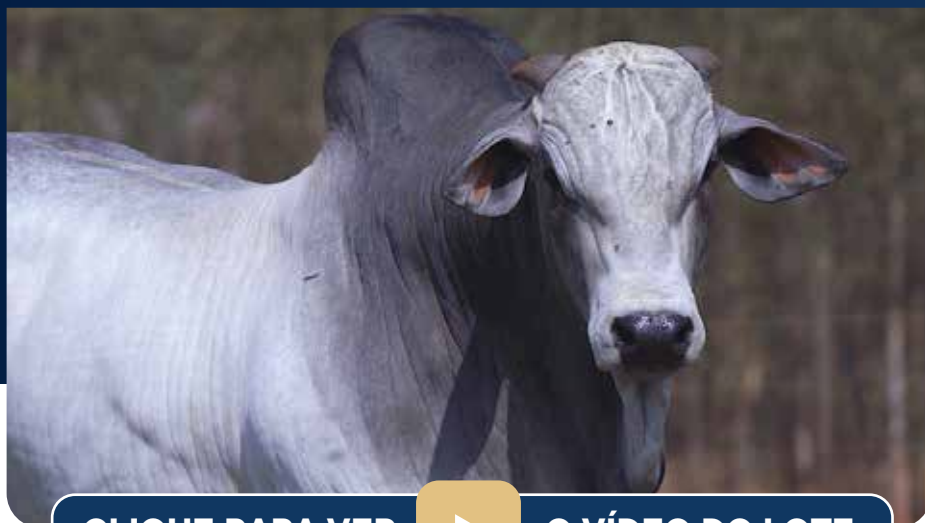
	IQG	DepPN	DepPM	DepPD	TMD	DepPS	GPD	IPP	AOL	EGS
DEP	19.6	-0.01	1.03	8.25	4.92	16.05	7.80	-27.88	1.62	-1.37
TOP	9		35	7	17	6	10	2	19	90
CLASSE	E									



	MGTe	MP120	DP210	DP450	DAOL	DACAB	DSTAY	D3P	MGTe_CR
DEP	18.36	1.1	9.9	20.3	1.0	-0.6	87.4	75.9	20.7
TOP	14	40	10	8	29	100	4	40	10

# LOTE 44

INDIVIDUAL



CLIQUE PARA VER



O VÍDEO DO LOTE

PHOC 2890

## 2890 FIV PHOC

PESO 741 • NASCIMENTO 19/11/2022 • CE 34

REM ARMADOR

RAIN

BRUTAO FIV DA 3A

OFALY FIV STM

4275 FIV DA 3A

LUKLA FIV STM



AOL	EGS	MAR
115.3	4.26	2.84



	iABCZg	PD-ED	PS-ED	PM-EM	TMD	IPPg	STAYg	AOLg	ACABg
DEP	16.79	9.4	21.36	0.98	5.5	-13.7	34.2	2.43	-0.13
DECA	1	1	1	4	1	2	2	1	6
%P	5	3	1	-	9	-	-	4	



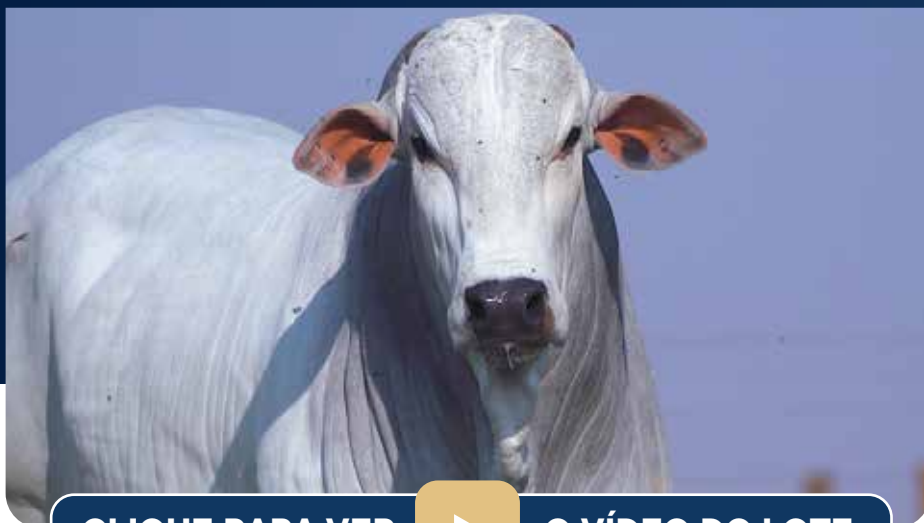
	IQG	DepPN	DepPM	DepPD	TMD	DepPS	GPD	IPP	AOL	EGS
DEP	19.0	0.57	0.98	9.35	5.46	21.36	12.01	-13.73	2.43	-0.13
TOP	10		36	4	13	2	2	18	7	57
CLASSE	E									



	MGTe	MP120	DP210	DP450	DAOL	DACAB	DSTAY	D3P	MGTe_CR
DEP	19.49	2.5	10.8	25.7	2.5	0.2	73.0	74.6	18.5
TOP	12	12	8	3	11	16	25	45	15

# LOTE 45

INDIVIDUAL



CLIQUE PARA VER



O VÍDEO DO LOTE

PHOC 2603

## 2603 PHOC

PESO 765 • NASCIMENTO 05/09/2022 • CE 38

REM CABALLERO

D4685 DA MN

HULK TE DA HORA



MUAY FIV STM

2128 TE DA HORA

INDICA STM



AOL	EGS	MAR
110.7	4.73	3.60



	iABCZg	PD-ED	PS-ED	PM-EM	TMD	IPPg	STAYg	AOLg	ACABg
DEP	21.45	9.0	17.85	3.69	9.7	-20.6	39.8	1.45	-0.76
DECA	1	1	1	1	1	1	1	2	8
%P	2	3	3	2	0.5	5	2	-	



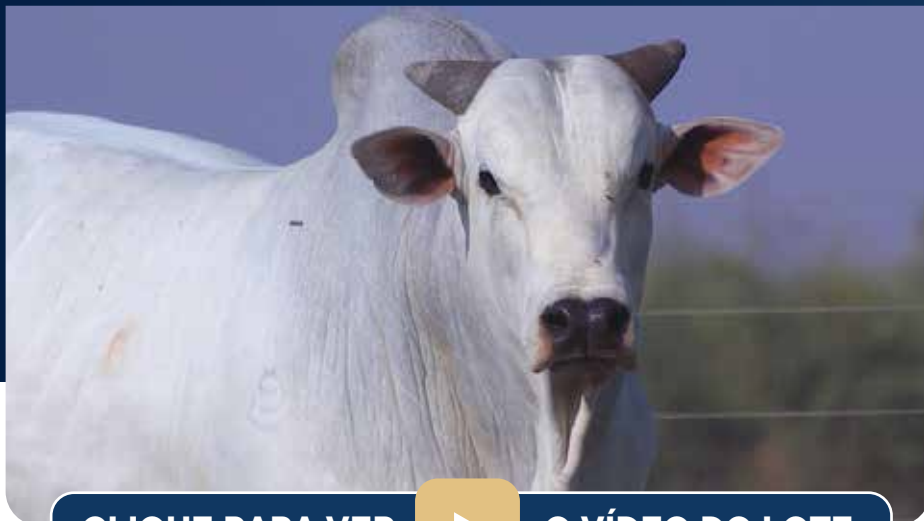
	IQG	DepPN	DepPM	DepPD	TMD	DepPS	GPD	IPP	AOL	EGS
DEP	24.8	0.29	3.69	8.95	9.66	17.85	8.90	-20.64	1.45	-0.76
TOP	4		3	5	1	4	6	6	22	77
CLASSE	E									



	MGTe	MP120	DP210	DP450	DAOL	DACAB	DSTAY	D3P	MGTe_CR
DEP	20.26	2.7	9.4	18.3	0.4	0.0	88.4	87.4	23.8
TOP	10	11	11	11	43	54	3	4	5

# LOTE 46

INDIVIDUAL



CLIQUE PARA VER



O VÍDEO DO LOTE

PHOC 2616

## 2616 FIV PHOC

PESO 775 • NASCIMENTO 05/09/2022 • CE 40

REM FUZIL

REM ARMADOR

VANCOUVER BONS

NA FIV STM

PORCINA FIV BONS

JULIET STM



AOL	EGS	MAR
119.8	5.68	3.59



	iABCZg	PD-ED	PS-ED	PM-EM	TMD	IPPg	STAYg	AOLg	ACABg
DEP	27.28	9.6	20.51	3.25	8.5	-23.2	42.5	3.27	-0.42
DECA	1	1	1	1	1	1	1	1	7
%P	0.1	2	1	3	2	3	0.1	1	



	IQG	DepPN	DepPM	DepPD	TMD	DepPS	GPD	IPP	AOL	EGS
DEP	34.4	0.34	3.25	9.56	8.50	20.51	10.95	-23.18	3.27	-0.42
TOP	0.5		5	4	3	2	2	4	2	66
CLASSE	E									



	MGTe	MP120	DP210	DP450	DAOL	DACAB	DSTAY	D3P	MGTe_CR
DEP	23.68	3.6	10.5	19.5	3.5	0.6	85.6	83.5	24.6
TOP	5	5	8	9	5	4	5	11	4



# LOTE 47

INDIVIDUAL



CLIQUE PARA VER



O VÍDEO DO LOTE

PHOC 2702

## 2702 FIV PHOC

PESO 773 • NASCIMENTO 27/09/2022 • CE 39

MACEGAL DO IZ

SHERLOCK MAT.

QUEDHAR FIV G.SALES

OCEANA FIV STM

LORANE G.SALES

INFINITA STM



AOL	EGS	MAR
111.2	4.25	3.23



	iABCZg	PD-ED	PS-ED	PM-EM	TMD	IPPg	STAYg	AOLg	ACABg
DEP	15.65	11.5	20.84	0.73	6.8	-0.9	32.5	3.16	1.21
DECA	1	1	1	4	1	6	4	1	2
%P	6	0.5	1	-	4	-	-	1	



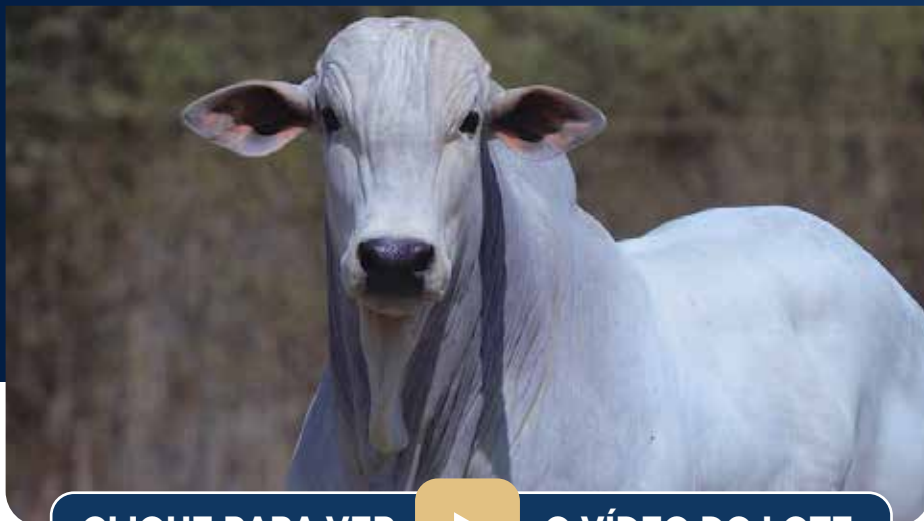
	IQG	DepPN	DepPM	DepPD	TMD	DepPS	GPD	IPP	AOL	EGS
DEP	21.6	0.64	0.73	11.53	6.84	20.84	9.31	-0.93	3.16	1.21
TOP	7		41	1	7	2	5	62	2	15
CLASSE	E									



	MGTe	MP120	DP210	DP450	DAOL	DACAB	DSTAY	D3P	MGTe_CR
DEP	19.07	1.7	11.2	21.6	4.3	0.5	68.8	70.3	16.7
TOP	12	25	7	6	2	4	34	62	21

# LOTE 48

INDIVIDUAL



CLIQUE PARA VER



O VÍDEO DO LOTE

PHOC 2713

## 2713 PHOC

PESO 735 • NASCIMENTO 28/09/2022 • CE 36

REM DANUT

REM ARMADOR

INVENCIVEL DA HORA

OLEISIA FIV STM

2272 DA HORA

LIZIPING STM



AOL	EGS	MAR
112.6	5.68	3.10



	iABCZg	PD-ED	PS-ED	PM-EM	TMD	IPPg	STAYg	AOLg	ACABg
DEP	23.52	13.9	21.30	3.70	11.1	-5.6	39.6	3.84	-2.30
DECA	1	1	1	1	1	4	1	1	10
%P	1	0.1	1	2	0.1	-	2	0.5	



	IQG	DepPN	DepPM	DepPD	TMD	DepPS	GPD	IPP	AOL	EGS
DEP	23.8	1.13	3.69	13.98	11.13	21.29	7.30	-5.63	3.84	-2.30
TOP	5		3	0.5	0.5	2	12	44	0.5	99
CLASSE	E									



	MGTe	MP120	DP210	DP450	DAOL	DACAB	DSTAY	D3P	MGTe_CR
DEP	26.52	3.1	18.8 <sup>1</sup>	27.2	3.8	-0.5	87.4	80.6	26.5
TOP	2	7	0.5	2	3	100	4	20	2

LOTE 49

INDIVIDUAL

CUTOLO  
AGROPECUÁRIA



CLIQUE PARA VER



O VÍDEO DO LOTE

PHOC 2570

2570 FIV PHOC

PESO 757 • NASCIMENTO 05/09/2022 • CE 36

B5968 FIV DA S.NICE

GALAPAGO TE DA BELA

CARBONO FIV DA S.NICE

NANA STM

B6444 DA S.NICE

INFINITA STM

US  
DGT  
PROFIT

AOL	EGS	MAR
118.7	5.20	3.67



	iABCZg	PD-ED	PS-ED	PM-EM	TMD	IPPg	STAYg	AOLg	ACABg
DEP	18.08	10.0	15.65	0.55	6.0	-14.6	35.4	4.14	1.39
DECA	1	1	1	5	1	2	2	1	1
%P	3	2	5	-	7	-	-	0.1	

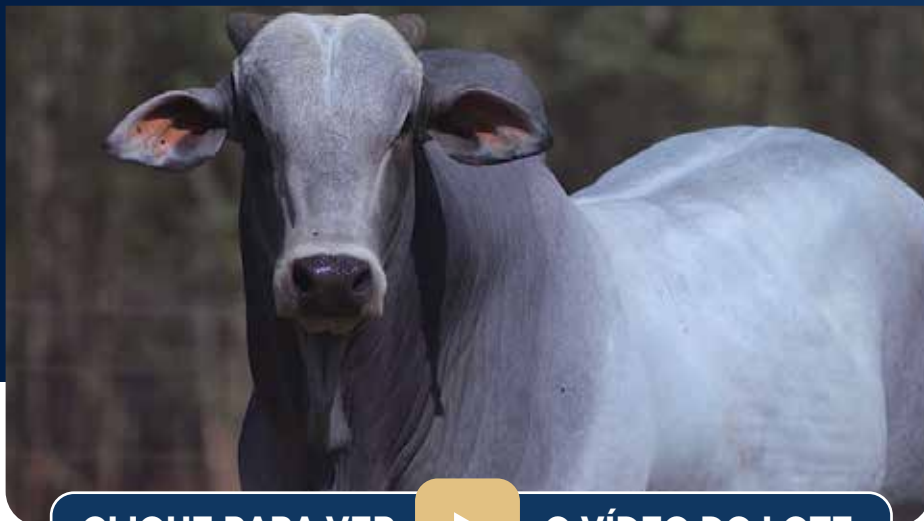


	IQG	DepPN	DepPM	DepPD	TMD	DepPS	GPD	IPP	AOL	EGS
DEP	21.4	0.54	0.55	9.98	6.00	15.65	5.67	-14.55	4.14	1.39
TOP	7		45	3	10	7	20	16	0.5	12
CLASSE	E									



	MGTe	MP120	DP210	DP450	DAOL	DACAB	DSTAY	D3P	MGTe_CR
DEP	21.71	0.0	12.0	19.7	5.1	0.1	79.5	81.6	20.7
TOP	7	71	6	9	1	23	14	17	10

LOTE **50**  
INDIVIDUAL



CLIQUE PARA VER



O VÍDEO DO LOTE

PHOC 2846  
**2846 FIV PHOC**

PESO **775** • NASCIMENTO **01/11/2022** • CE **41**

REM DANUT

GENERAL DA MN

INVENCIVEL DA HORA

1430 DA PHOC

2272 DA HORA

NATURA FIV STM



AOL	EGS	MAR
106.8	4.26	2.67



	iABCZg	PD-ED	PS-ED	PM-EM	TMD	IPPg	STAYg	AOLg	ACABg
DEP	34.07 <sup>3</sup>	14.4	28.02	5.54	14.0	-22.4	40.9	6.11	2.42
DECA	1	1	1	1	1	1	1	1	1
%P	0.1	0.1	0.1	0.1	0.1	3	0.5	0.1	



	IQG	DepPN	DepPM	DepPD	TMD	DepPS	GPD	IPP	AOL	EGS
DEP	44.7 <sup>3</sup>	0.56	5.54	14.39	14.00	28.02	13.63	-22.40	6.11	2.42
TOP	0.1		0.5	0.1	0.1	0.1	0.5	4	0.1	2
CLASSE	E									



	MGTe	MP120	DP210	DP450	DAOL	DACAB	DSTAY	D3P	MGTe_CR
DEP	29.48 <sup>3</sup>	6.0	15.5	27.1	5.5	0.1	86.4	88.1	29.5 <sup>3</sup>
TOP	1	0.5	2	2	0.5	21	4	3	0.5

LOTE **51**  
INDIVIDUAL



CLIQUE PARA VER



O VÍDEO DO LOTE

PHOC 2810  
**2810 FIV PHOC**

PESO **779** • NASCIMENTO **19/10/2022** • CE **40**



AOL	EGS	MAR
115.7	6.61	3.68



	iABCZg	PD-ED	PS-ED	PM-EM	TMD	IPPg	STAYg	AOLg	ACABg
DEP	28.85	9.2	19.71	7.28 <sup>2</sup>	13.0	-14.1	44.2	1.33	1.80
DECA	1	1	1	1	1	2	1	2	1
%P	0.1	3	2	0.1	0.1	-	0.1	-	-



	IQG	DepPN	DepPM	DepPD	TMD	DepPS	GPD	IPP	AOL	EGS
DEP	35.7	0.76	7.27 <sup>2</sup>	9.24	12.98	19.71	10.47	-14.14	1.33	1.80
TOP	0.5		0.1	4	0.1	3	3	17	25	6
CLASSE	E									



	MGTe	MP120	DP210	DP450	DAOL	DACAB	DSTAY	D3P	MGTe_CR
DEP	22.03	4.5	10.3	22.2	1.9	0.0	82.8	83.4	23.8
TOP	7	2	9	6	16	36	9	12	5

LOTE **52**  
INDIVIDUAL



CLIQUE PARA VER



O VÍDEO DO LOTE

PHOC 2929  
**2929 PHOC**

PESO **745** • NASCIMENTO **03/12/2022** • CE **40**

REM DANUT

REM ARMADOR

LOTUS FIV KATISPERA

NATIVA FIV STM

05 FIV LA KATISPERA

JULIET STM



AOL	EGS	MAR
113.9	6.15	3.28



	iABCZg	PD-ED	PS-ED	PM-EM	TMD	IPPg	STAYg	AOLg	ACABg
DEP	25.65	10.9	19.90	3.46	9.4	-19.7	41.3	2.53	2.59
DECA	1	1	1	1	1	1	1	1	1
%P	0.5	1	2	3	1	5	0.5	4	



	IQG	DepPN	DepPM	DepPD	TMD	DepPS	GPD	IPP	AOL	EGS
DEP	31.7	0.16	3.46	10.88	9.39	19.90	9.02	-19.68	2.53	2.59
TOP	1		4	2	2	2	6	7	6	2
CLASSE	E									



	MGTe	MP120	DP210	DP450	DAOL	DACAB	DSTAY	D3P	MGTe_CR
DEP	22.38	4.8	12.1	23.6	1.7	0.7	86.7	75.7	23.4
TOP	6	2	5	5	19	3	4	41	5

LOTE **53**  
INDIVIDUAL



CLIQUE PARA VER



O VÍDEO DO LOTE

PHOC 2703  
**2703 FIV PHOC**

PESO **825** • NASCIMENTO **28/09/2022** • CE **43**

REM DANUT

REM ARMADOR

INVENCIVEL DA HORA



NATALIA FIV STM

2272 DA HORA

JULIET STM



AOL	EGS	MAR
101.0	6.15	3.73



	iABCZg	PD-ED	PS-ED	PM-EM	TMD	IPPg	STAYg	AOLg	ACABg
DEP	33.34 <sup>4</sup>	12.5	21.40	7.82 <sup>1</sup>	16.1	-32.3	44.3	1.63	0.37
DECA	1	1	1	1	1	1	1	2	4
%P	0.1	0.5	1	0.1	0.1	0.5	0.1	-	



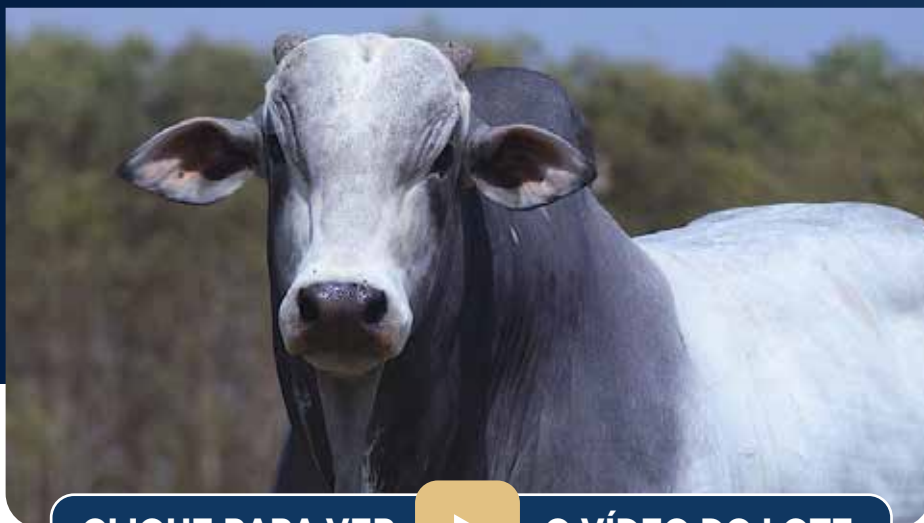
	IQG	DepPN	DepPM	DepPD	TMD	DepPS	GPD	IPP	AOL	EGS
DEP	39.9	0.59	7.82 <sup>1</sup>	12.45	16.09	21.40	8.96	-32.31	1.63	0.37
TOP	0.1		0.1	0.5	0.1	2	6	0.5	18	39
CLASSE	E									



	MGTe	MP120	DP210	DP450	DAOL	DACAB	DSTAY	D3P	MGTe_CR
DEP	24.36	6.1	10.1	21.4	1.7	0.5	87.4	87.1	27.0
TOP	4	0.5	9	7	18	5	4	4	2

LOTE **54**  
INDIVIDUAL

**CUTOLO**  
AGROPECUÁRIA



CLIQUE PARA VER



O VÍDEO DO LOTE

PHOC 2756  
**2756 FIV PHOC**

PESO **847** • NASCIMENTO **07/10/2022** • CE **42**

REM DANUT

REM ARMADOR

INVENCIVEL DA HORA

OLEISIA FIV STM

2272 DA HORA

LIZIPING STM

**US**  
DGT  
BROSI

AOL	EGS	MAR
126.4	7.57	3.43

**PMGZ**

	iABCZg	PD-ED	PS-ED	PM-EM	TMD	IPPg	STAYg	AOLg	ACABg
DEP	29.75	16.9 <sup>1</sup>	25.49	5.42	14.9	-7.1	39.8	3.10	1.33
DECA	1	1	1	1	1	4	1	1	1
%P	0.1	0.1	0.1	0.1	0.1	-	2	2	

**GENE PLUS**

	IQG	DepPN	DepPM	DepPD	TMD	DepPS	GPD	IPP	AOL	EGS
DEP	36.2	0.88	5.42	16.93	14.90	25.49	8.56	-7.12	3.10	1.33
TOP	0.5		0.5	0.1	0.1	0.5	7	38	3	13
CLASSE	E									

**ANCP**

	MGTe	MP120	DP210	DP450	DAOL	DACAB	DSTAY	D3P	MGTe_CR
DEP	26.99	6.3 <sup>3</sup>	12.8	26.5	3.2	0.3	85.6	87.0	28.2
TOP	2	0.5	4	3	6	9	5	4	1



LOTE **55**  
INDIVIDUAL

**CUTOLO**  
AGROPECUÁRIA



CLIQUE PARA VER



O VÍDEO DO LOTE

PHOC 2726  
**2726 FIV PHOC**

PESO **783** • NASCIMENTO **01/10/2022** • CE **39**

REM DANUT

CZAR MATI

INVENCIVEL DA HORA



1566 FIV PHOC

2272 DA HORA

BAUNILHA MAT.

**US**  
DGT  
PROFIT

AOL	EGS	MAR
109.2	4.73	3.65



	iABCZg	PD-ED	PS-ED	PM-EM	TMD	IPPg	STAYg	AOLg	ACABg
DEP	20.27	7.4	8.79	2.18	7.0	-27.3	39.8	1.87	0.81
DECA	1	1	3	2	1	1	1	1	3
%P	2	7	-	-	4	1	2	10	



	IQG	DepPN	DepPM	DepPD	TMD	DepPS	GPD	IPP	AOL	EGS
DEP	23.3	0.39	2.18	7.40	6.97	8.79	1.39	-27.30	1.87	0.81
TOP	5		14	10	6	28	57	2	14	25
CLASSE	E									



	MGTe	MP120	DP210	DP450	DAOL	DACAB	DSTAY	D3P	MGTe_CR
DEP	18.73	1.3	10.9	11.5	1.3	0.1	82.9	83.0	22.4
TOP	13	33	7	27	24	25	9	13	7

LOTE **56**  
INDIVIDUAL



CLIQUE PARA VER



O VÍDEO DO LOTE

PHOC 2758  
**2758 FIV PHOC**

PESO **857** • NASCIMENTO **07/10/2022** • CE **43**

REM DANUT

CZAR MATI

INVENCIVEL DA HORA



1566 FIV PHOC

2272 DA HORA

BAUNILHA MAT.



AOL	EGS	MAR
98.2	4.26	3.31



	iABCZg	PD-ED	PS-ED	PM-EM	TMD	IPPg	STAYg	AOLg	ACABg
DEP	19.52	14.4	22.48	2.96	11.5	-11.6	33.6	2.74	0.63
DECA	1	1	1	1	1	2	3	1	3
%P	2	0.1	0.5	5	0.1	-	-	3	

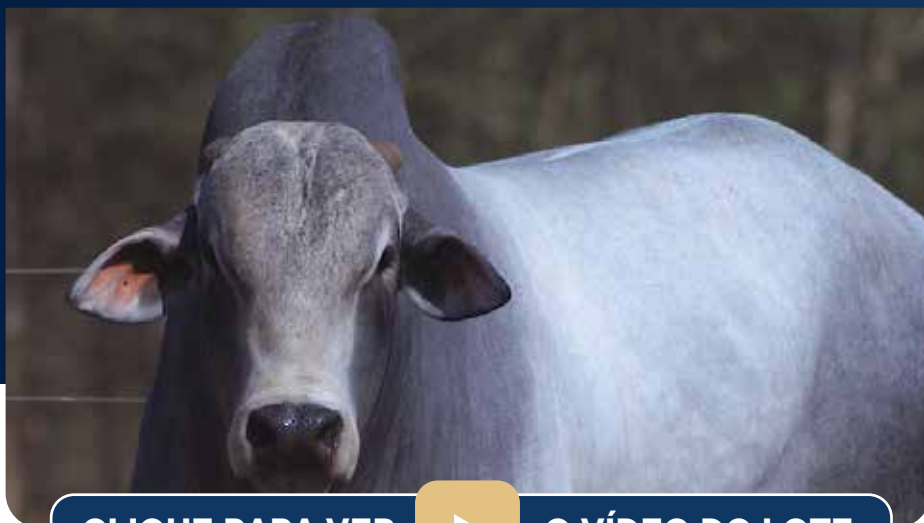


	IQG	DepPN	DepPM	DepPD	TMD	DepPS	GPD	IPP	AOL	EGS
DEP	21.0	1.66	2.96	14.39	11.46	22.48	8.09	-11.59	2.74	0.63
TOP	8		7	0.1	0.5	1	8	24	4	30
CLASSE	E									



	MGTe	MP120	DP210	DP450	DAOL	DACAB	DSTAY	D3P	MGTe_CR
DEP	24.81	3.3	15.6	27.9	2.8	-0.2	85.0	83.0	25.6
TOP	4	6	2	2	8	79	6	13	3

LOTE **57**  
INDIVIDUAL



CLIQUE PARA VER



O VÍDEO DO LOTE

PHOC 2404  
**2404 PHOC**

PESO **767** • NASCIMENTO **18/07/2022** • CE **36**



AOL	EGS	MAR
109.5	5.67	3.30



	iABCZg	PD-ED	PS-ED	PM-EM	TMD	IPPg	STAYg	AOLg	ACABg
DEP	20.05	6.1	12.81	1.03	4.4	-15.5	42.6	3.62	-0.49
DECA	1	2	1	4	2	2	1	1	7
%P	2	-	9	-	-	-	0.1	0.5	



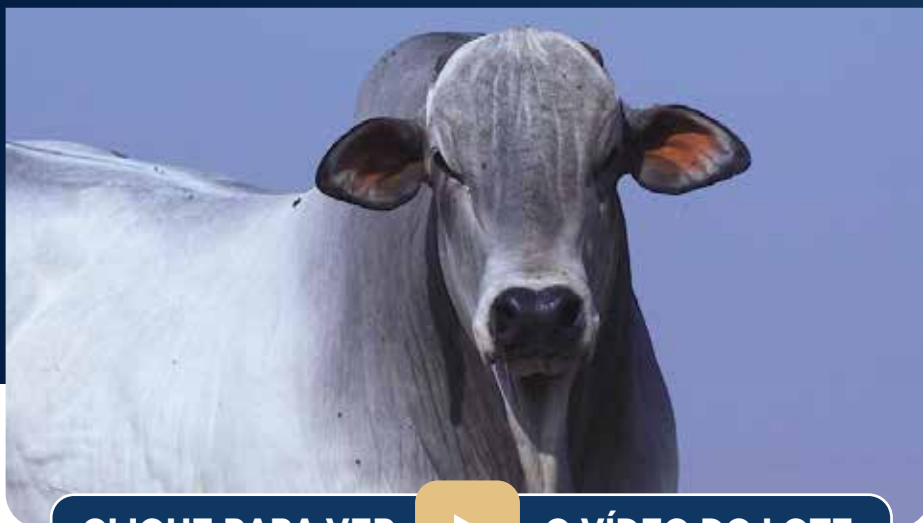
	IQG	DepPN	DepPM	DepPD	TMD	DepPS	GPD	IPP	AOL	EGS
DEP	21.8	0.30	1.03	6.07	4.38	12.81	6.74	-15.49	3.62	-0.49
TOP	7		35	17	21	14	14	14	1	69
CLASSE	E									



	MGTe	MP120	DP210	DP450	DAOL	DACAB	DSTAY	D3P	MGTe_CR
DEP	18.77	2.3	6.4	15.1	3.4	0.3	86.8	78.4	19.2
TOP	13	15	23	17	5	12	4	29	14

LOTE **58**  
INDIVIDUAL

**CUTOLO**  
AGROPECUÁRIA



CLIQUE PARA VER



O VÍDEO DO LOTE

PHOC 2777  
**2777 FIV PHOC**

PESO **849** • NASCIMENTO **13/10/2022** • CE **37**

REM DANUT

CZAR MATI

INVENCIVEL DA HORA



1566 FIV PHOC

2272 DA HORA

BAUNILHA MAT.

**US**  
DGT  
PROFIT

AOL	EGS	MAR
108.7	5.20	2.90



	iABCZg	PD-ED	PS-ED	PM-EM	TMD	IPPg	STAYg	AOLg	ACABg
DEP	23.29	15.4 <sup>2</sup>	24.10	0.62	9.9	-15.8	38.1	3.75	-0.27
DECA	1	1	1	4	1	1	1	1	6
%P	1	0.1	0.5	-	0.5	10	4	0.5	

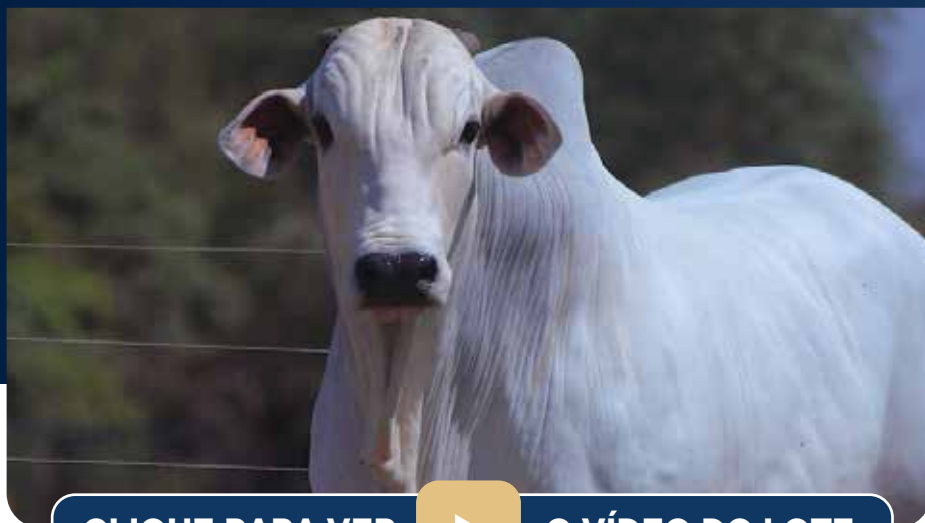


	IQG	DepPN	DepPM	DepPD	TMD	DepPS	GPD	IPP	AOL	EGS
DEP	23.4	1.57	0.62	15.43	9.85	24.10	8.67	-15.82	3.75	-0.27
TOP	5		44	0.1	1	0.5	7	13	1	61
CLASSE	E									



	MGTe	MP120	DP210	DP450	DAOL	DACAB	DSTAY	D3P	MGTe_CR
DEP	27.07	0.9	16.8	27.1	3.5	-0.1	94.7	88.7	28.2
TOP	2	44	1	2	4	69	0.1	3	1

LOTE **59**  
INDIVIDUAL



CLIQUE PARA VER



O VÍDEO DO LOTE

PHOC 2410  
**2410 PHOC**

PESO **737** • NASCIMENTO **20/07/2022** • CE **38**

ZAPP BEABISA

RAIN

DAMASCO MAT.

ONELIA FIV STM

AMBOA MAT.

KRISTEL STM



AOL	EGS	MAR
111.8	4.73	3.01



	iABCZg	PD-ED	PS-ED	PM-EM	TMD	IPPg	STAYg	AOLg	ACABg
DEP	18.95	4.2	10.23	-0.19	1.6	-22.3	41.8	1.98	1.15
DECA	1	3	2	6	5	1	1	1	2
%P	3	-	-	-	-	3	0.5	9	



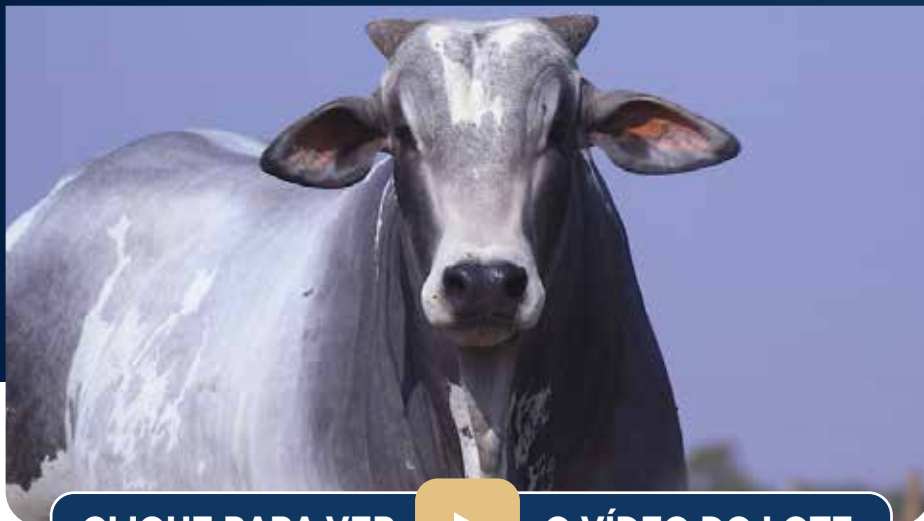
	IQG	DepPN	DepPM	DepPD	TMD	DepPS	GPD	IPP	AOL	EGS
DEP	22.5	0.38	-0.19	4.16	1.55	10.23	6.07	-22.33	1.98	1.15
TOP	6		63	32	51	22	18	4	12	16
CLASSE	E									



	MGTe	MP120	DP210	DP450	DAOL	DACAB	DSTAY	D3P	MGTe_CR
DEP	18.55	0.6	7.8	17.8	2.5	0.3	84.0	76.4	19.0
TOP	14	52	16	11	10	10	7	38	14

# LOTE 60

INDIVIDUAL



CLIQUE PARA VER



O VÍDEO DO LOTE

PHOC 2887

## 2887 FIV PHOC

PESO 795 • NASCIMENTO 19/11/2022 • CE 37

B5968 FIV DA S.NICE

IMPULSO FIV STM

CARBONO FIV DA S.NICE



1696 PHOC

B6444 DA S.NICE

MERINA STM



AOL	EGS	MAR
112.4	4.26	3.93 <sup>2</sup>



	iABCZg	PD-ED	PS-ED	PM-EM	TMD	IPPg	STAYg	AOLg	ACABg
DEP	19.95	11.6	22.20	1.51	6.7	-21.8	33.4	4.35	-0.07
DECA	1	1	1	3	1	1	3	1	6
%P	2	0.5	0.5	-	5	4	-	0.1	



	IQG	DepPN	DepPM	DepPD	TMD	DepPS	GPD	IPP	AOL	EGS
DEP	21.9	0.91	1.51	11.58	6.72	22.20	10.62	-21.76	4.35	-0.07
TOP	7		25	1	7	1	3	5	0.5	54
CLASSE	E									



	MGTe	MP120	DP210	DP450	DAOL	DACAB	DSTAY	D3P	MGTe_CR
DEP	24.08	1.1	13.8	25.9	4.2	-0.6	81.1	85.9	24.2
TOP	4	40	3	3	2	100	11	6	4

# LOTE 61

INDIVIDUAL



CLIQUE PARA VER



O VÍDEO DO LOTE

PHOC 2502

## 2502 PHOC

PESO **737** • NASCIMENTO **16/08/2022** • CE **38**

BACKUP

MUKESH FIV COL

B2887 DA S.NICE

1647 PHOC

CAMISA DA S.NICE

NARUTA FIV STM



AOL	EGS	MAR
121.1	5.19	3.04



	iABCZg	PD-ED	PS-ED	PM-EM	TMD	IPPg	STAYg	AOLg	ACABg
DEP	21.87	7.2	8.52	3.01	8.0	-23.8	40.7	3.76	2.14
DECA	1	1	3	1	1	1	1	1	1
%P	1	7	-	5	2	3	1	0.5	



	IQG	DepPN	DepPM	DepPD	TMD	DepPS	GPD	IPP	AOL	EGS
DEP	27.1	-0.04	3.01	7.18	7.99	8.52	1.34	-23.83	3.75	2.14
TOP	3		6	11	3	29	57	3	1	4
CLASSE	E									



	MGTe	MP120	DP210	DP450	DAOL	DACAB	DSTAY	D3P	MGTe_CR
DEP	20.02	2.3	8.1	12.9	3.3	0.1	82.7	89.5	21.8
TOP	10	16	15	22	5	25	9	2	8

# LOTE 62

INDIVIDUAL



CLIQUE PARA VER



O VÍDEO DO LOTE

PHOC 2565

## 2565 PHOC

PESO 721 • NASCIMENTO 04/09/2022 • CE 39

LEGAL DA BELA

CALIBRE FIV CAMPARINO

STAFF DA BELA

1870 PHOC

MACIA DA BELA

NUBIA STM



AOL	EGS	MAR
108.2	11.35 <sup>1</sup>	3.62



	iABCZg	PD-ED	PS-ED	PM-EM	TMD	IPPg	STAYg	AOLg	ACABg
DEP	28.77	7.7	18.44	4.04	9.1	-37.5	43.2	1.14	3.61
DECA	1	1	1	1	1	1	1	3	1
%P	0.1	6	2	1	1	0.1	0.1	-	



	IQG	DepPN	DepPM	DepPD	TMD	DepPS	GPD	IPP	AOL	EGS
DEP	36.3	-0.14	4.04	7.74	9.07	18.44	10.69	-37.47	1.14	3.61
TOP	0.5		2	8	2	4	3	0.1	30	0.1
CLASSE	E									



	MGTe	MP120	DP210	DP450	DAOL	DACAB	DSTAY	D3P	MGTe_CR
DEP	23.18	5.6	8.8	18.9	1.1	1.4 <sup>1</sup>	89.1	85.3	25.3
TOP	5	0.5	13	10	27	0.1	2	7	3



# LOTE 63

INDIVIDUAL



CLIQUE PARA VER



O VÍDEO DO LOTE

PHOC 2660

## 2660 PHOC

PESO 735 • NASCIMENTO 17/09/2022 • CE 42

LEGAL DA BELA

CALIBRE FIV CAMPARINO

STAFF DA BELA

1929 FIV PHOC

MACIA DA BELA

NATALIA FIV STM



AOL EGS MAR  
103.9 9.46<sup>2</sup> 3.33



	iABCZg	PD-ED	PS-ED	PM-EM	TMD	IPPg	STAYg	AOLg	ACABg
DEP	25.44	10.9	23.12	4.58	11.0	-15.1	40.3	1.46	1.82
DECA	1	1	1	1	1	2	1	2	1
%P	0.5	1	0.5	0.5	0.1	-	1	-	



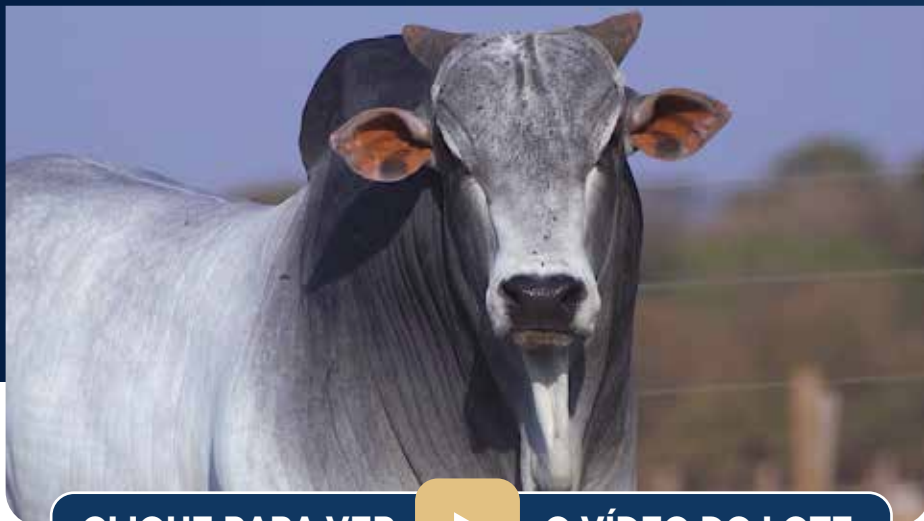
	IQG	DepPN	DepPM	DepPD	TMD	DepPS	GPD	IPP	AOL	EGS
DEP	32.2	0.55	4.58	10.94	11.03	23.12	12.19	-15.12	1.46	1.82
TOP	1		1	2	0.5	1	1	15	22	6
CLASSE	E									



	MGTe	MP120	DP210	DP450	DAOL	DACAB	DSTAY	D3P	MGTe_CR
DEP	19.33	4.4	14.2	24.3	1.3	0.5	84.3	55.9	19.5
TOP	12	2	3	4	24	5	7	95	13

# LOTE 64

INDIVIDUAL



CLIQUE PARA VER



O VÍDEO DO LOTE

PHOC 2723

## 2723 FIV PHOC

PESO 727 • NASCIMENTO 30/09/2022 • CE 40

QUARUP BONS

MUSCAT FIV STM

ESTORIL MAT.



1529 DA PHOC

BARAVAH MAT.

INVICTA STM



AOL	EGS	MAR
120.7	5.68	3.27



	iABCZg	PD-ED	PS-ED	PM-EM	TMD	IPPg	STAYg	AOLg	ACABg
DEP	23.56	5.9	16.76	4.36	7.3	-14.9	39.7	4.93	2.01
DECA	1	2	1	1	1	2	1	1	1
%P	1	-	3	0.5	3	-	2	0.1	



	IQG	DepPN	DepPM	DepPD	TMD	DepPS	GPD	IPP	AOL	EGS
DEP	34.2	0.22	4.36	5.93	7.26	16.76	10.83	-14.92	4.93	2.01
TOP	0.5		1	18	5	5	3	15	0.1	4
CLASSE	E									



	MGTe	MP120	DP210	DP450	DAOL	DACAB	DSTAY	D3P	MGTe_CR
DEP	20.89	3.7	6.4	16.2	5.4	0.2	78.3	82.1	20.0
TOP	9	4	23	14	0.5	15	16	15	12

# LOTE 65

INDIVIDUAL



CLIQUE PARA VER



O VÍDEO DO LOTE

PHOC 2822

## 2822 FIV PHOC

PESO 703 • NASCIMENTO 21/10/2022 • CE 38

QUARUP BONS

REM UINTELO

ESTORIL MAT.

JULIET STM

BARAVAH MAT.

REM VARUNAKA



AOL	EGS	MAR
96.9	5.20	3.06



	iABCZg	PD-ED	PS-ED	PM-EM	TMD	IPPg	STAYg	AOLg	ACABg
DEP	34.16 <sup>2</sup>	8.0	20.72	5.93	10.7	-45.09 <sup>1</sup>	44.9 <sup>3</sup>	3.71	1.77
DECA	1	1	1	1	1	1	1	1	1
%P	0.1	5	1	0.1	0.5	0.1	0.1	0.5	



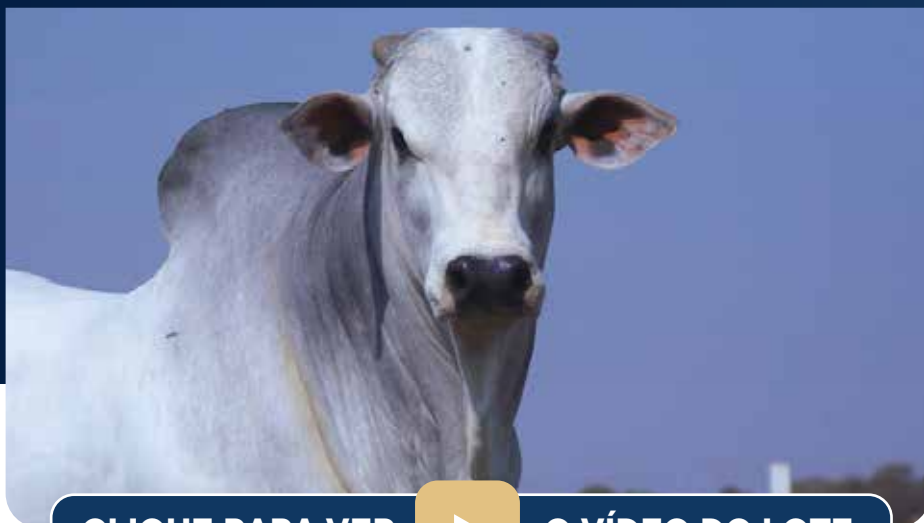
	IQG	DepPN	DepPM	DepPD	TMD	DepPS	GPD	IPP	AOL	EGS
DEP	47.8 <sup>2</sup>	-1.15	5.93	8.04	10.71	20.72	12.67	-45.09	3.71	1.77
TOP	0.1		0.1	7	0.5	2	1	0.1	1	7
CLASSE	E									



	MGTe	MP120	DP210	DP450	DAOL	DACAB	DSTAY	D3P	MGTe_CR
DEP	25.62	4.2	8.9	19.9	3.2	0.7	88.7	91.8	27.5
TOP	3	3	12	8	6	3	3	0.5	2

# LOTE 66

INDIVIDUAL



CLIQUE PARA VER



O VÍDEO DO LOTE

PHOC 2788

## 2788 PHOC

PESO **723** • NASCIMENTO **17/10/2022** • CE **39**

REM FUZIL

REM ARMADOR

VANCOUVER BONS

OMARA FIV STM

PORCINA FIV BONS

LIZIPING STM



AOL	EGS	MAR
107.5	4.25	2.62



	iABCZg	PD-ED	PS-ED	PM-EM	TMD	IPPg	STAYg	AOLg	ACABg
DEP	21.31	10.0	13.45	1.21	5.5	-29.1	38.7	3.75	0.74
DECA	1	1	1	3	1	1	1	1	3
%P	2	2	8	-	9	1	3	0.5	



	IQG	DepPN	DepPM	DepPD	TMD	DepPS	GPD	IPP	AOL	EGS
DEP	23.7	0.87	1.21	9.98	5.50	13.45	3.48	-29.06	3.75	0.74
TOP	5		31	3	13	12	37	1	1	27
CLASSE	E									



	MGTe	MP120	DP210	DP450	DAOL	DACAB	DSTAY	D3P	MGTe_CR
DEP	23.02	1.4	11.1	17.7	5.2	0.6	84.4	82.5	22.4
TOP	6	33	7	12	1	3	7	14	7

# LOTE 67

INDIVIDUAL



CLIQUE PARA VER



O VÍDEO DO LOTE

PHOC 2567

## 2567 PHOC

PESO 767 • NASCIMENTO 05/09/2022 • CE 37

BACKUP

SHERLOCK MAT.

B2887 DA S.NICE

OLEGARIA STM

CAMISA DA S.NICE

LUPITA FIV STM



AOL	EGS	MAR
112.6	6.62	3.25



	iABCZg	PD-ED	PS-ED	PM-EM	TMD	IPPg	STAYg	AOLg	ACABg
DEP	11.54	4.3	11.04	0.44	1.9	-3.3	36.8	0.86	1.96
DECA	2	3	2	5	4	5	1	4	1
%P	14	-	-	-	-	-	7	-	-



	IQG	DepPN	DepPM	DepPD	TMD	DepPS	GPD	IPP	AOL	EGS
DEP	13.6	0.60	0.44	4.29	1.94	11.04	6.74	-3.34	0.86	1.96
TOP	21		48	31	46	19	14	53	37	5
CLASSE	S									



	MGTe	MP120	DP210	DP450	DAOL	DACAB	DSTAY	D3P	MGTe_CR
DEP	16.86	2.4	7.6	13.7	-0.1	0.1	83.8	86.1	20.4
TOP	18	14	17	20	69	27	7	6	11

# LOTE 68

INDIVIDUAL



CLIQUE PARA VER



O VÍDEO DO LOTE

PHOC 2510

## 2510 FIV PHOC

PESO 701 • NASCIMENTO 19/08/2022 • CE 36

BACKUP

NEHRU MAT.

B2887 DA S.NICE

1777 FIV PHOC

CAMISA DA S.NICE

NEVADA STM



AOL EGS MAR

98.2 8.04 3.64



	iABCZg	PD-ED	PS-ED	PM-EM	TMD	IPPg	STAYg	AOLg	ACABg
DEP	19.27	6.1	16.44	1.09	4.1	-22.4	37.6	3.48	2.68
DECA	1	2	1	3	2	1	1	1	1
%P	3	-	4	-	-	3	5	0.5	



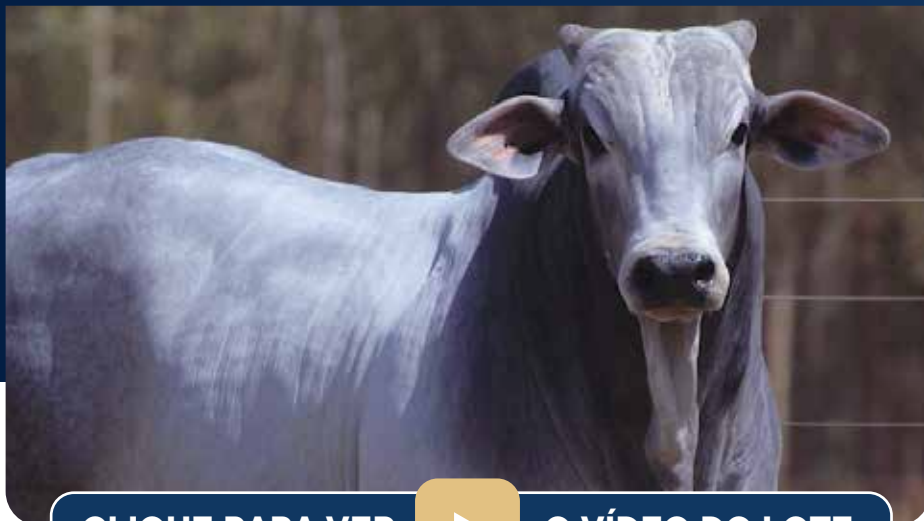
	IQG	DepPN	DepPM	DepPD	TMD	DepPS	GPD	IPP	AOL	EGS
DEP	27.0	0.16	1.09	6.09	4.05	16.44	10.34	-22.39	3.48	2.68
TOP	3		34	17	24	6	3	4	1	1
CLASSE	E									



	MGTe	MP120	DP210	DP450	DAOL	DACAB	DSTAY	D3P	MGTe_CR
DEP	17.34	1.1	4.3	11.0	2.3	0.5	85.8	85.7	19.0
TOP	17	40	36	28	12	5	5	6	14

# LOTE 69

INDIVIDUAL



CLIQUE PARA VER



O VÍDEO DO LOTE

PHOC 2878

## 2878 FIV PHOC

PESO **677** • NASCIMENTO **17/11/2022** • CE **39**

REM DANUT

REM USP

INVENCIVEL DA HORA

NEVOA STM

2272 DA HORA

JULIE STM



AOL	EGS	MAR
96.9	6.15	3.59



	iABCZg	PD-ED	PS-ED	PM-EM	TMD	IPPg	STAYg	AOLg	ACABg
DEP	29.03	8.2	14.58	2.66	7.6	-36.1	45.0 <sup>2</sup>	1.71	2.83
DECA	1	1	1	1	1	1	1	2	1
%P	0.1	5	6	7	3	0.1	0.1	-	



	IQG	DepPN	DepPM	DepPD	TMD	DepPS	GPD	IPP	AOL	EGS
DEP	36.0	-0.35	2.66	8.21	7.60	14.58	6.37	-36.11	1.71	2.83
TOP	0.5		9	7	4	9	16	0.5	17	1
CLASSE	E									



	MGTe	MP120	DP210	DP450	DAOL	DACAB	DSTAY	D3P	MGTe_CR
DEP	21.26	1.0	8.2	14.8	2.2	0.0	88.7	93.0	24.3
TOP	8	41	15	18	13	38	3	0.5	4

**15**  
SET

**DOMINGO**  
**14h00**  
HORÁRIO DE BRASÍLIA

— 8º LEILÃO —

# TOUROS

**NELORE CUTOLO**

**PRECOCIDADE E RENDIMENTO DE CARÇAÇA**

**TOUROS NELORE P.O.**

✓ **ULTRASSONOGRÁFIA DE CARÇAÇA**  **DGT**  
Brasil

✓ **TRIPLAMENTE AVALIADOS**

